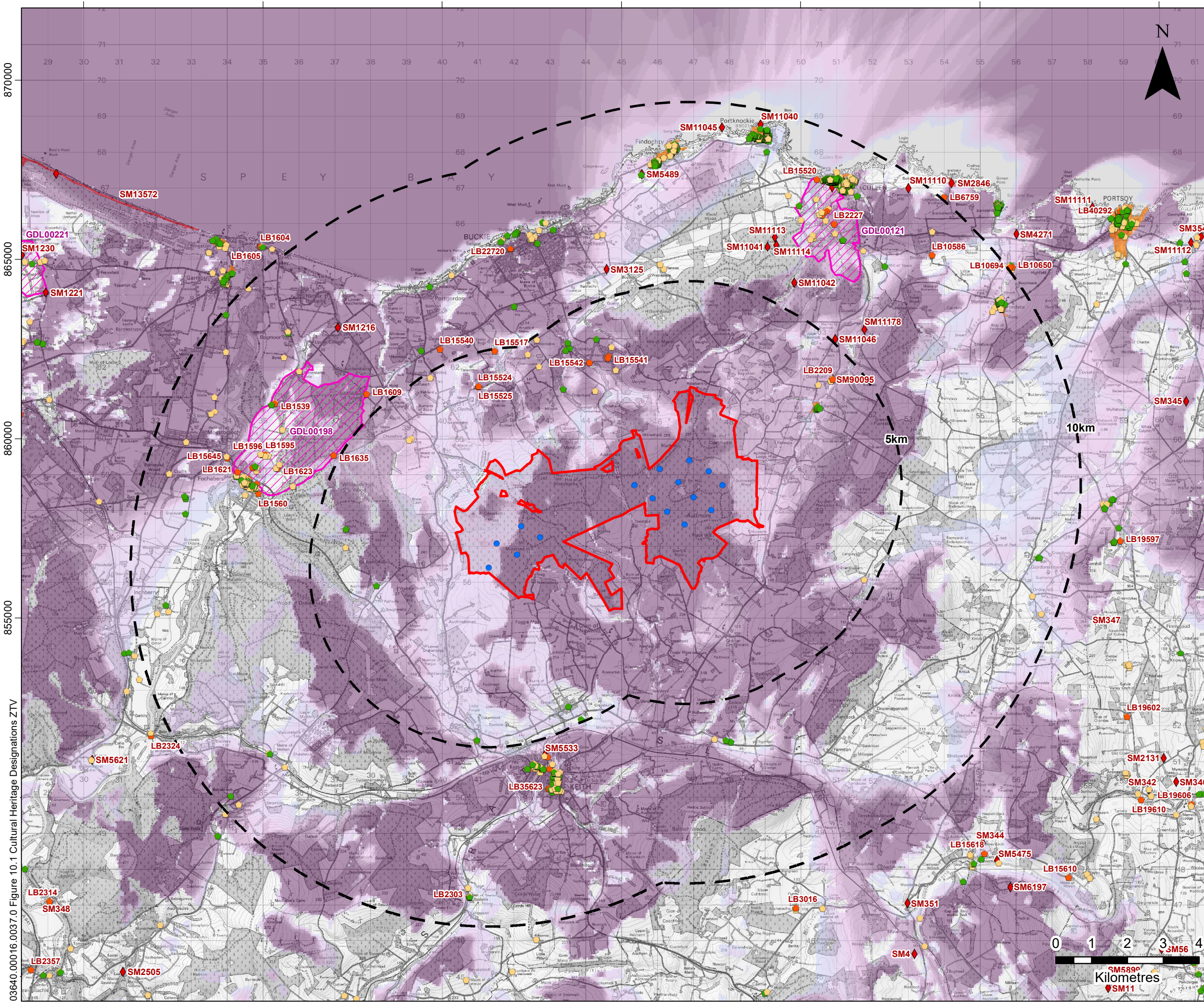


330000 335000 340000 345000 350000 355000 360000



NOTES
 © Historic Environment Scotland, contains OS data
 © Crown copyright and database right (2021)

LEGEND

- Site Boundary
- Turbine Location
- Turbine Buffers: 5km and 10km
- Cultural Heritage**
 - Category A Listed Building
 - Category B Listed Building
 - Category C Listed Building
 - Scheduled Monument
 - Scheduled Monument
 - Inventoried Garden and Designed Landscape
 - Conservation Area
- Zone of Theoretical Visibility: No. of Turbine Tips Visible**
 - High : 16
 - Low : 1

Note

This Zone of Theoretical Visibility (ZTV) has been generated using ESRI ArcGIS Spatial Analyst extension. The digital terrain model (DTM) has been derived from OS Terrain 50 dataset (+/- 10 m). Earth curvature has been included in the ZTV calculation and refraction of light has been applied using SNH guidance settings. The ZTV has been generated from a viewing height of 2 m above ground level which falls within recommendations by "Visual Representation of Windfarms" prepared for Scottish Natural Heritage (SNH) February 2017 - Version 2.2.

The use of ZTV mapping at this stage is limited and the following assumptions should be noted:

- The proposed turbine tip height of 200 m have been used for generating the ZTV.
- The ZTV is generated from a bare earth terrain and does not account for the screening effect of features within the landscape such as settlements and woodland. It does not indicate potential visual effects or show the likely significance of effects. It shows potential theoretical visibility only. The ZTV has been produced for the purpose of informing 'on the ground' visual assessment.
- The ZTV has been generated up to 45 km from the proposed Aultmore turbines.

VATTENFALL

SLR

4/5 LOCHSIDE VIEW
 EDINBURGH PARK
 EDINBURGH
 EH12 9DH

T: +44 (0)131 335 6830
 www.slrconsulting.com

AULTMORE WIND FARM
SCOPING REPORT
CULTURAL HERITAGE DESIGNATIONS
FIGURE 10.1

Scale 1:100,000 @ A3 Date AUGUST 2021

03640_00016_0037.0 Figure 10.1 Cultural Heritage Designations ZTV