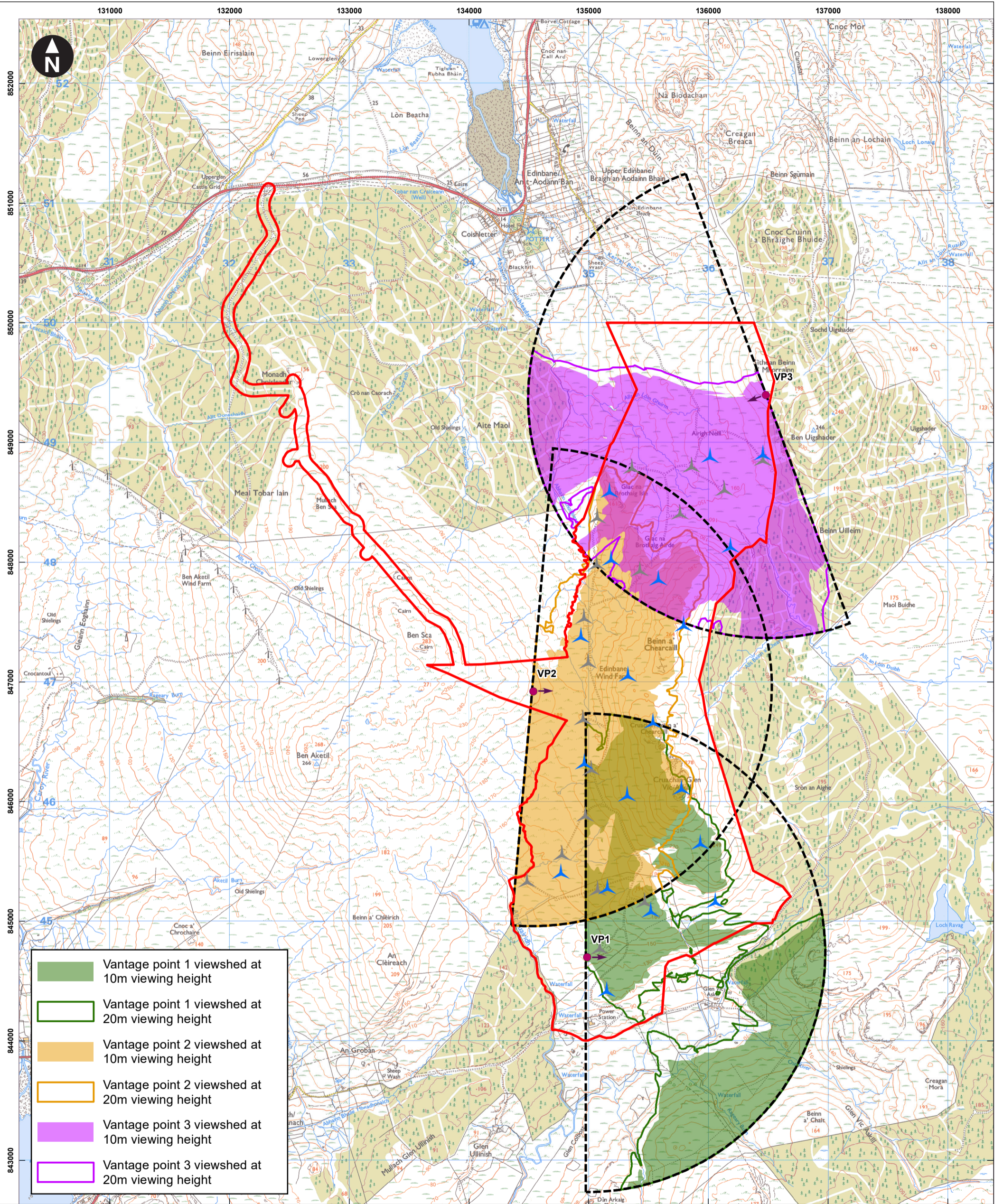


\\g0s-fs14.global.amec.com\g0s-fs14-shared\GWM\DATA\PROJECT\808798-Edinbane Wind Farm Repowering EIA\Deliver Stage\TechnicalDrawings\ArcGIS\Mxd\808798-WOOD-ZZ-XX-FG-OE-00005_S0_C02.mxd Originator: gwenda.pannu



	Vantage point 1 viewed at 10m viewing height
	Vantage point 1 viewed at 20m viewing height
	Vantage point 2 viewed at 10m viewing height
	Vantage point 2 viewed at 20m viewing height
	Vantage point 3 viewed at 10m viewing height
	Vantage point 3 viewed at 20m viewing height

Key

- Site boundary
- Existing turbine (18 WTGs)
- Proposed turbine (19 WTGs)
- Vantage point location
- 2km viewing arc

Vantage point 1 location NG 34987 44700
 Vantage point 2 location NG 34538 46921
 Vantage point 3 location NG 36481 49397

Scale at A3: 1:30,000
 © Crown copyright and database rights 2022 Ordnance Survey
 0100031673

Edinbane Wind Farm Replacement EIA
 Ornithology Consultation

Figure 8.1
Vantage points and viewsheds

November 2022

