

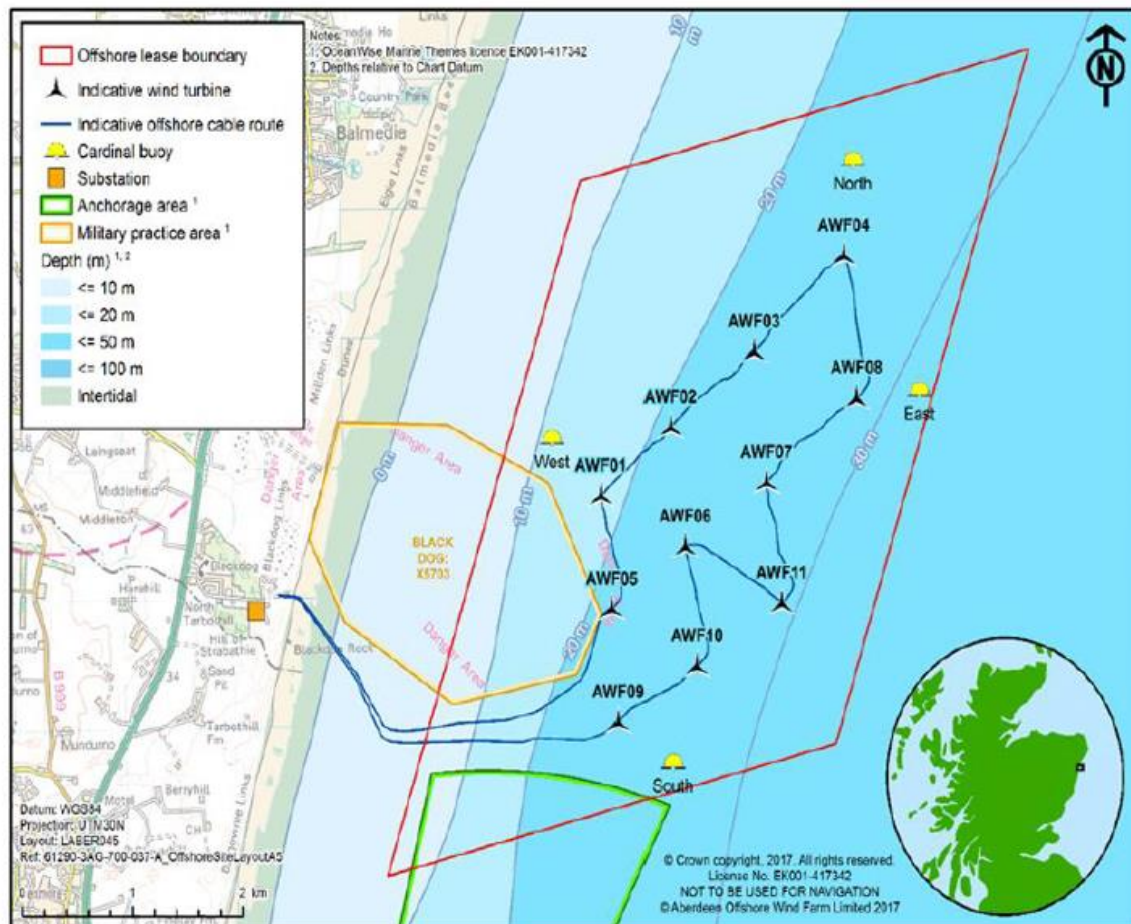


WINDFARM	Aberdeen Offshore Windfarm (AOW)
NOTICE NUMBER	031 Rev 5
TITLE	Extended Dates AtoN Light Characteristics
DATE RELEASED	14/06/2021
DATE TO EXPIRE	31/07/2021

Notice to Mariners Aberdeen Offshore Windfarm 031 Rev5

Aberdeen Offshore Windfarm is located approximately 2.4 km offshore in Aberdeen Bay at Blackdog. The windfarm's first power was generated on 1st July 2018 and is comprised of eleven V164-8.8MW turbines paired with suction bucket jacket foundations and 66kv cabling. The windfarm is managed by Vattenfall's operations and maintenance team, based in Aberdeen.

AOWF Turbine and Cable Routes and Lease Boundary. NOT TO BE USED FOR NAVIGATION.





WINDFARM Aberdeen Offshore Windfarm (AOW)
NOTICE NUMBER 031 Rev 5
TITLE Extended Dates AtoN Light Characteristics
DATE RELEASED 14/06/2021
DATE TO EXPIRE 31/07/2021

Notice to Mariners Aberdeen Offshore Windfarm 031 Rev5

OPERATION

Recent inspection reports of the marine navigation lights at the Aberdeen OWF, It has been observed there is an issue with the light characteristics, as well as 'bright lights' close to the navigation lights on the structure.

NOTICE

All mariners are to be advised during the this period until further notice and this issue is rectified.

Marine navigational aids are affected with incorrect characteristics and it is advised to take extra precautions whilst navigating around the Windfarms boundary.

Inspection Date	Inspection Detail Notes
14/12/2020	Wrong character, Fl.Y.2s and should be Fl.Y.5s. Nav lights also near bright lights on structure. Nav lights in sync
14/12/2020	Wrong character, Fl.Y.2s and should be Fl.Y.5s. Nav lights also near bright lights on structure. Nav lights in sync
14/12/2020	Wrong character, Fl.Y.2s and should be Fl.Y.5s. Nav lights also near bright lights on structure. Nav lights in sync
14/12/2020	Wrong character, Fl.Y.2s and should be Fl.Y.5s. Nav lights also near bright lights on structure. Nav lights in sync
14/12/2020	Wrong character, Fl.Y.2s and should be Fl.Y.5s. Nav lights also near bright lights on structure. Nav lights in sync

SCHEDULE

- DATES – ~~12:00hrs 24th December 2020 to 30th January 2021.~~
- Updated – ~~10:00hrs 1st February 2021 to 28th February 2021.~~
- Updated – ~~14:00hrs 1st March 2021 to 31st March 2021.~~
- Updated – ~~14:00hrs 1st April 2021 to 30th April 2021.~~
- Updated – 14:00hrs 10th May 2021 to 31st May 2021.
- Updated – 14:00hrs 14th June 2021 to 31st July 2021.



WINDFARM	Aberdeen Offshore Windfarm (AOW)
NOTICE NUMBER	031 Rev 5
TITLE	Extended Dates AtoN Light Characteristics
DATE RELEASED	14/06/2021
DATE TO EXPIRE	31/07/2021

Notice to Mariners Aberdeen Offshore Windfarm 031 Rev5

AREA OF OPERATIONS

Area between turbines in following positions:

	Latitude	Longitude
A02	57° 13.420' N	002° 0.758' W
B01	57° 12.476' N	002° 0.627' W
B04	57° 12.960' N	001° 59.151' W
B06	57° 13.809' N	001° 58.450' W
A05	57° 14.405' N	001° 58.551' W

CONTACTS

Aberdeen Offshore Windfarm

In case of emergency

Marine Control Centre Vattenfall

Phone Number: +45 27 87 50 00