



VATTENFALL

WINDFARM Aberdeen Offshore Windfarm (AOW)
 NOTICE NUMBER 34
 TITLE National Grid Fault/Outage
 DATE RELEASED 30/08/2021
 DATE TO EXPIRE 03/09/2021

Notice to Mariners Aberdeen Offshore Windfarm

Vattenfall Aberdeen Windfarm

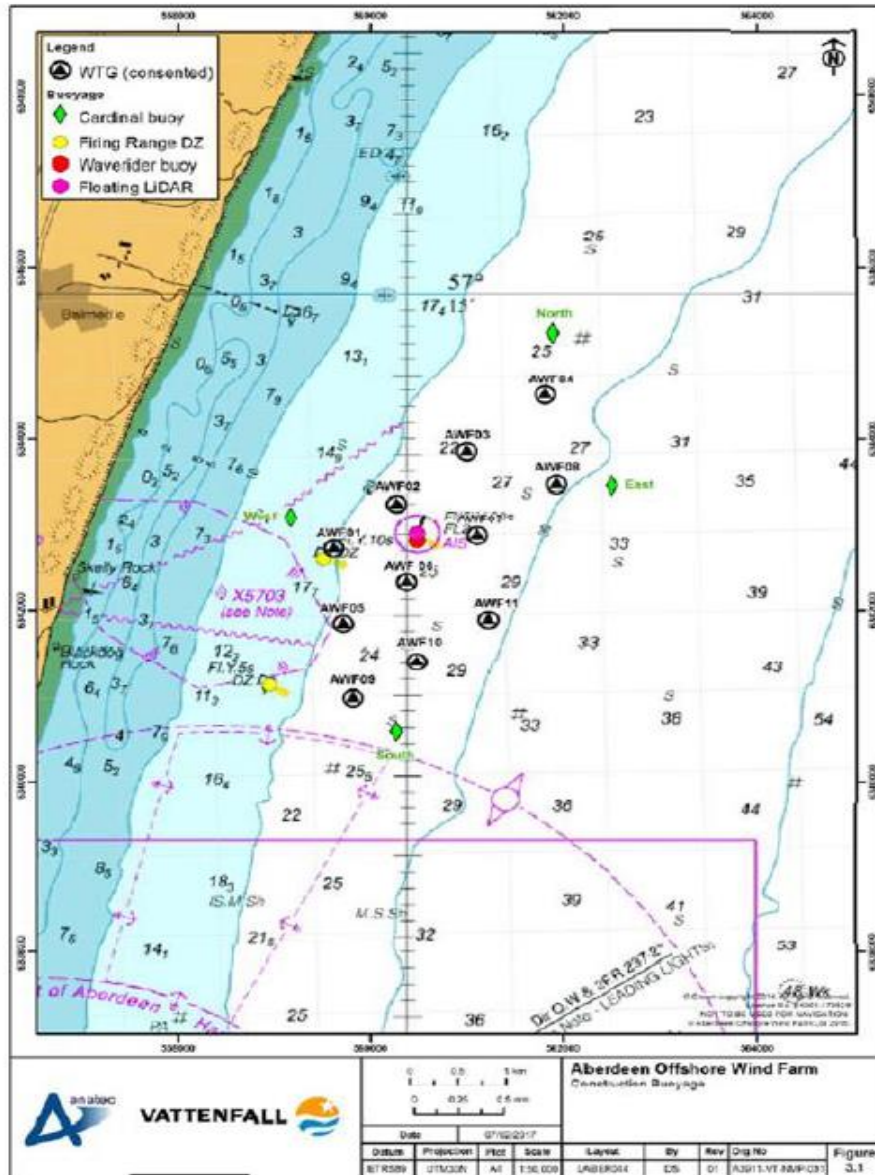


Figure 1 AOWF Site Layout (NOT TO BE USED FOR NAVIGATION)



VATTENFALL

WINDFARM	Aberdeen Offshore Windfarm (AOW)
NOTICE NUMBER	34
TITLE	National Grid Fault/Outage
DATE RELEASED	30/08/2021
DATE TO EXPIRE	03/09/2021

Notice to Mariners Aberdeen Offshore Windfarm

Windfarm Picture

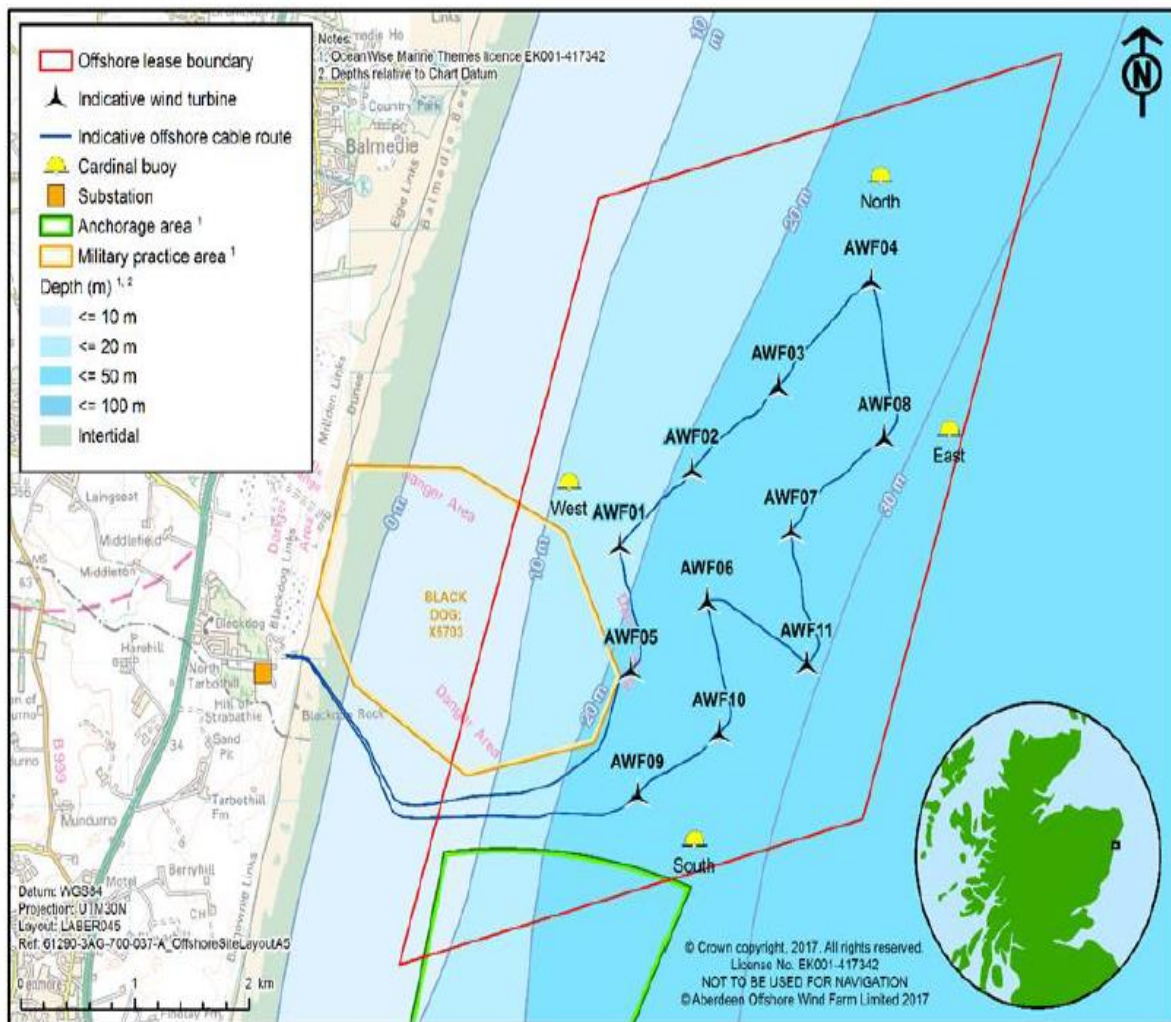


Figure 2 AOWF TURBINE LAYOUT AND CABLE ROUTES WITHIN OFFSHORE LEASE BOUNDARY (NOT TO BE USED FOR NAVIGATION)



WINDFARM	Aberdeen Offshore Windfarm (AOW)
NOTICE NUMBER	34
TITLE	National Grid Fault/Outage
DATE RELEASED	30/08/2021
DATE TO EXPIRE	03/09/2021

Notice to Mariners Aberdeen Offshore Windfarm

OPERATION

National Grid Outage 30th August – 3rd September

NOTICE

All mariners are to be advised during the un-planned National Grid outage on Aberdeen Windfarm.

Aviation lights will be out during this period.

Aids to navigation will lose power once battery system depletes - it is advised to take extra precautions whilst navigating around the Windfarms boundary.

SCHEDULE

Dates of un-planned outage 06:00 30th August – 14:00 3rd September 2021

Wind turbines x 11: V164-8.0 MW turbines supplied by MHI Vestas Offshore Wind. Tip height: 191m/626.5 feet above LAT.

Rotor diameter: 164m/538 feet.

Distance from shore: 2.4km.

Water depth: 20 -30m LAT.

AREA OF OPERATIONS

Area between turbines in following positions:

	Latitude	Longitude
A02	57° 13.420' N	002° 0.758' W
B01	57° 12.476' N	002° 0.627' W
B04	57° 12.960' N	001° 59.151' W
B06	57° 13.809' N	001° 58.450' W
A05	57° 14.405' N	001° 58.551' W

CONTACTS

Aberdeen Offshore Windfarm

CONTACT FOR MARINE CONTROL:

Vattenfall MCC Vattenfall, +45(0)27880833

vsc.mcc@vattenfall.com

Emergency only: +45 27 87 50 00