

Redesign of Aultmore Wind Farm

Newsletter Spring 2022

Clashindarroch Wind Farm near Huntly in Aberdeenshire.

About the project

Welcome to the first edition of the Aultmore Wind Farm Redesign newsletter from Vattenfall.

Vattenfall is in the early stages of redesigning its consented Aultmore Wind Farm scheme which is located approximately 6km north of Keith and 7km south of Buckie, in Moray.

About the project

Aultmore Wind Farm was originally consented by Moray Council in 2014 as a 13-turbine scheme. Since then, significant advances in turbine technology have taken place with more powerful turbines becoming available. We are therefore looking to redesign the scheme in order to increase the amount of fossil-free electricity that can be produced and increase the benefits to the local area.

In November 2021 we submitted a Scoping Report to the Scottish Government as well as other key consultees (including local Community Councils) seeking feedback on the proposed scope of environmental work which will help to inform the redesign.

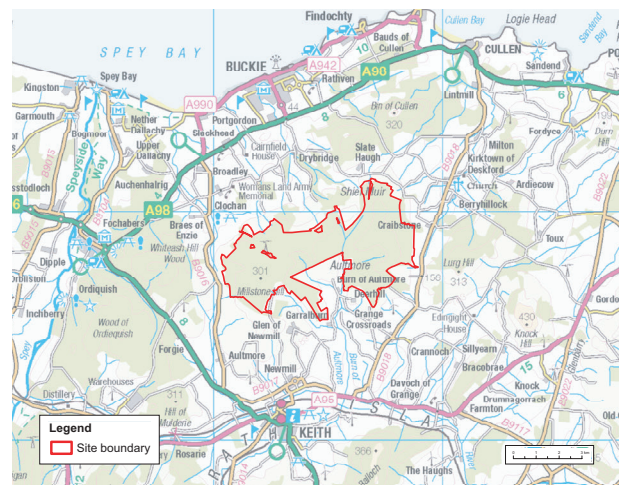
The Report set out a proposed redesigned 16-turbine scheme utilising modern and efficient turbines, each with a maximum tip height of up to 200m and generation capacity of around 6MW, which will significantly increase the generation of renewable electricity from the site.

The site consists predominantly of commercial forestry and lies in an area “likely to be most appropriate for onshore windfarms” within Moray Council’s Local Development Plan Spatial Framework, in addition to being outwith any national or international landscape or ecological designations.

Over the next few months we will conduct detailed site surveys to explore the ecology, ornithology, flora,

fauna and overall biodiversity to ensure that we have a thorough understanding of the site and surrounding area. The findings from these surveys, together with feedback from key consultees and the community, will help to shape and develop the design.

Site location map



© Crown copyright, All rights reserved. 2022 Licence number 0100031673 © Vattenfall Wind Power Ltd 2022.

To view more detailed maps of the site, please visit the project website at www.vattenfall.co.uk/aultmore.



Working with the community

Early engagement

We are encouraging the local community (and wider public) to share their views with us on the proposed redesign at this early stage.

Public exhibitions

We are holding a series of public exhibitions in March to engage with the local community and gather feedback on the redesigned proposal. The events will provide a variety of information as well as the opportunity to talk to the project team. All those attending the exhibitions will be asked to respect any Covid measures in place.

The exhibition information will also be available online from Tuesday 22nd March on the project website at www.vattenfall.co.uk/aaultmore where further project information can be found.

We want to hear from as many people as possible during our exhibition and consultation. Your thoughts, views and ideas can help us understand what matters to you and your community, and how we can develop the best possible proposal.

Cullen Community & Residential Centre

Seafield Road, Cullen, AB56 4AF

Tuesday 22 March

2pm - 8pm

Portgordon Village Hall

Cross Street, Portgordon, Buckie, AB56 5QW

Wednesday 23 March

11am - 2pm

Newmill Village Hall

Mill Brae, Newmill, Keith, AB55 6TW

Wednesday 23 March

5pm - 8pm

Commenting on the proposal

Anyone wishing to provide feedback to Vattenfall on the proposal at this stage can submit comments in writing on a 'comments form' which will be available at the public exhibition events or online (from the project website), by email to aaultmore.windfarm@vattenfall.com or by post to the Aultmore Redesign Project Team at:

Vattenfall Wind Power Limited
St Andrew's House
Haugh Lane
Hexham
Northumberland
NE46 3QQ

The consultation closing date for feedback to Vattenfall on the proposal is **Friday 22nd April 2022**. There will be a further opportunity to comment on the project later in the design development process.

Any comments submitted to Vattenfall on the proposal at this time are not representations to the determining authority (Scottish Government's Energy Consents Unit). Should a formal Section 36 application for consent be submitted for this proposal there will be an opportunity at that time for people to submit formal comments to the determining authority.

Keeping you informed

For project updates please visit our website at www.vattenfall.co.uk/aaultmore or get in touch using the contact details above if you would like to be added to our newsletter mailing list.



Walkers at Pen y Cymoedd Wind Farm in South Wales (image by Michael Hall).

Delivering meaningful benefits

If approved, the proposed redesign will not only help towards climate targets but also deliver potentially significant benefits for communities in the local area.

Climate change emergency

Climate change has passed a major tipping point in society and it is now, without any doubt, understood to be the biggest issue that mankind faces. Carbon dioxide levels in the air are at their highest in 650,000 years¹ and 18 of the 19 hottest years on record globally have occurred since the year 2000².

The Scottish and UK Governments have each declared a “climate emergency” and set legally binding targets to reduce greenhouse gas emissions. To achieve these targets, transport, heating and industry will need to become increasingly electrified, meaning demand for electricity could double by 2050³.

Onshore wind (together with large scale solar) is now the cheapest way to generate electricity. The UK currently has 14GW of installed onshore wind capacity and it is estimated that by 2030, 30GW of onshore wind will be required across the UK to meet our climate targets at lowest cost to the consumer. As such, optimising sites like Aultmore could play an important role in this transition to a greener, low-carbon economy.

The redesigned Aultmore scheme could be capable of generating enough renewable electricity to power the equivalent of 70,000 homes⁴ compared to the original scheme's 21,000 homes.

Community investment

We believe our wind farms should be assets for local communities, supporting sustainable development locally and enhancing quality of life. It is only fair that the communities nearest our developments share in the benefits of harvesting the local wind resource.

Vattenfall has clear values and an ethos that places emphasis on working closely with local communities to make sure that we are developing projects that can bring a lasting sustainable benefit. We take a measured, paced and timely approach to explore the views of the community.

We follow the prevailing Scottish Government guidance on community benefit⁵ and, based on the 16-turbine redesigned layout, the 96MW scheme could provide a community benefit fund of around £480,000 each year to the local community⁶. Vattenfall is also considering offering local communities the opportunity to invest in the wind farm itself.

Local supply chain

In addition, we're committed to maximising the opportunities for the local supply chain to work with us and our contractors during the construction and operation of our wind farms. Historically, over 70% of Vattenfall's onshore wind expenditure is spent here in the UK with British businesses.

¹ <https://scrippsco2.ucsd.edu/faq.html>.

² <https://climate.nasa.gov/vital-signs/global-temperature/>

³ Climate Change Act www.legislation.gov.uk/ukpga/2008/27

⁴ www.renewableuk.com/page/UKWEDEexplained

⁵ Scottish Government guidance is “to continue at a national level to promote community benefits of the value equivalent to £5,000 per installed megawatt per annum, index linked for the operational lifetime of the project.”

⁶ Turbine numbers and technology (as well as Scottish Government guidance on community benefit) can change, which means that the community benefit figure may go up or down. The final figure will be confirmed when (and if) the project receives consent. More information can be found in the Scottish Government's 'Good Practice Principles for Community Benefits from Onshore Renewable Energy Developments'.



Not just wind energy

Introducing Vattenfall

We are one of Europe's leading energy companies. For more than 100 years we have been powered industry and supplied people's homes. We now want to make fossil-free living possible within one generation.

About Vattenfall

Vattenfall is one of Europe's largest producers and retailers of electricity and heat⁷. We are 100% owned by the Swedish state and currently employ more than 20,000 people across Europe.

We've had an extensive presence in the UK for over a decade, having grown our wind business from one project in 2008 to 11 today, and invested more than £3.5 billion in enough onshore and offshore wind to power around 800,000 homes.

We believe in being a good neighbour in the places where we develop, build, and operate wind farms.

Vattenfall's wind farm expertise extends across Europe, with wind farms in Sweden, Denmark, Germany, the Netherlands and the UK.

We also generate electricity from many other energy sources, including over 100 hydro plants. In fact, the name Vattenfall is the Swedish word for waterfall.



More than just wind

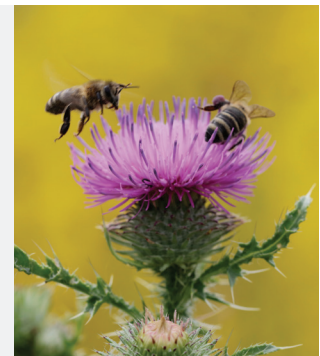
Vattenfall's activities extend beyond harnessing wind and water to generate electricity. For example, we're working with partners to develop fossil free steel, and we've helped build one of Europe's largest electric vehicle charging networks.

Here in the UK, we also design and build electric network infrastructure and are bringing low carbon heating solutions to developers and cities across the country.

Environment

The environment on and near our wind farm projects is important to us too. At Vattenfall, we have our own internal bioscience research and development team. Their work helps us improve how we protect the natural environment when we build and operate our developments.

For the proposed redesign of Aultmore Wind Farm we will be undertaking a detailed Environmental Impact Assessment (EIA) in order to identify, assess and propose mitigation for any potential impacts of the development on the physical, natural and cultural environment.



⁷ https://group.vattenfall.com/siteassets/corporate/investors/annual-reports/2020/vattenfall-annual-and-sustainability-report2020_.pdf