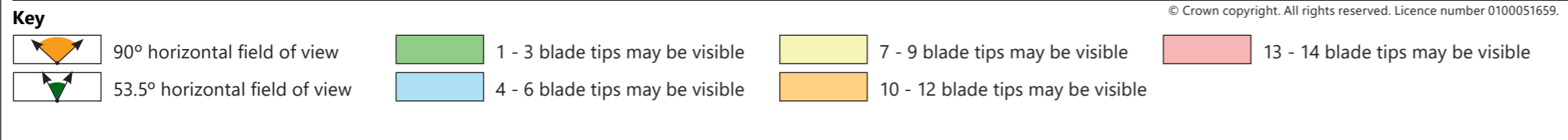
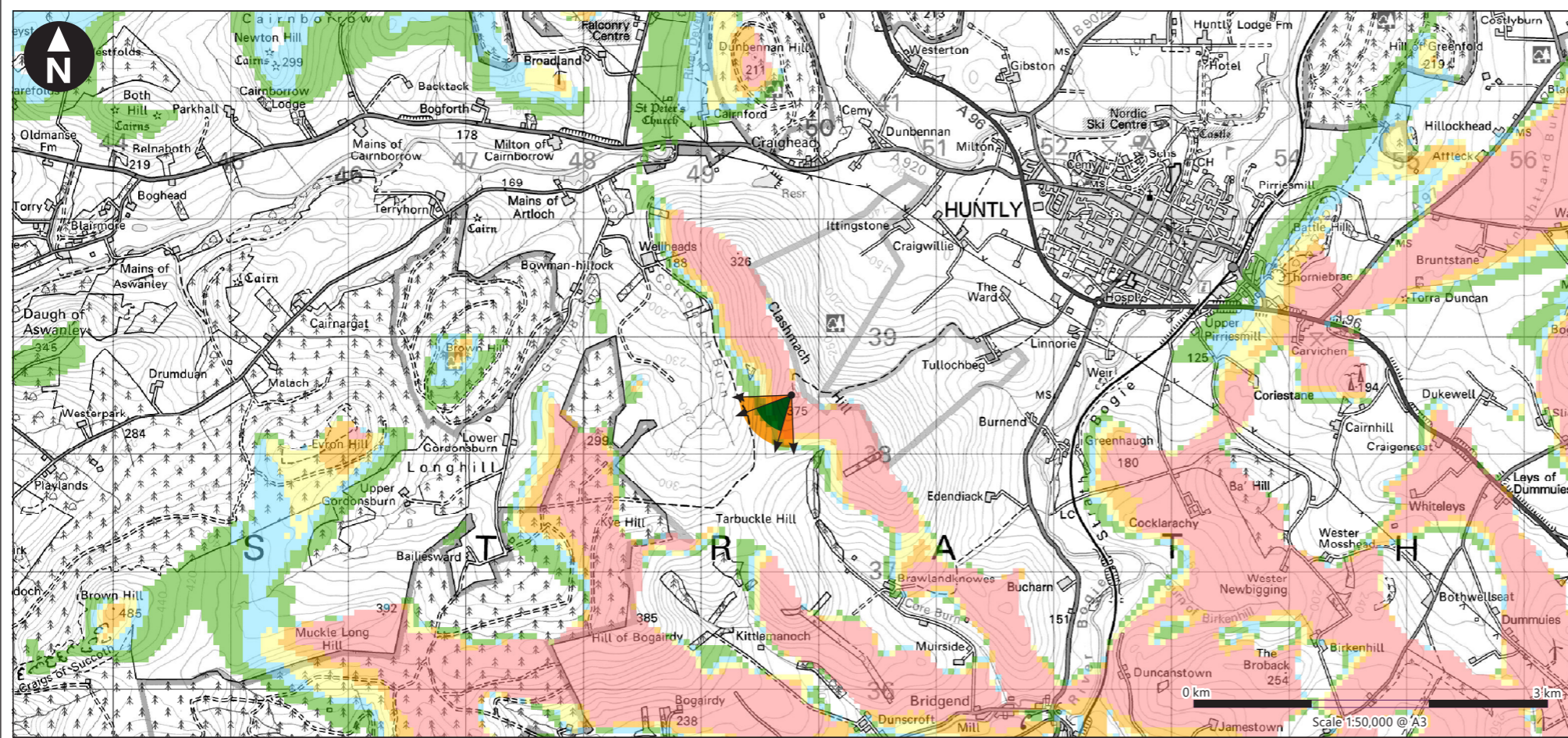
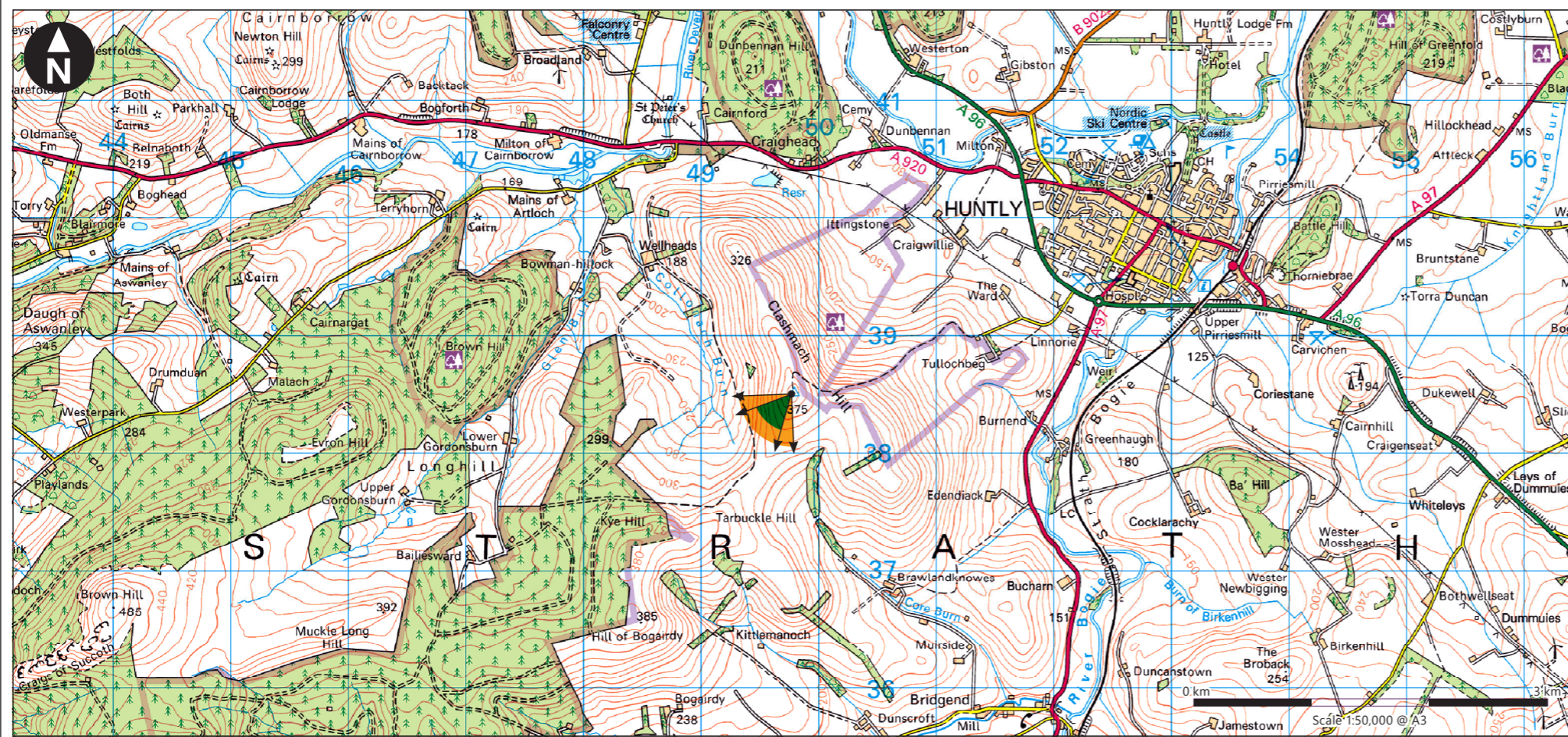


H:\data\Projects\807772 - Clashindarroch 2 Wind Farm\Deliver Stages\Design_Technical\Drawings\Figure 7.10 VP6 Clashmach Hill Figure 7.10 VP6 Clashmach 807772- WOOD-FG-SA-00016_R3.indd Originator: wilsco3



Viewpoint Parameters

OS reference:	E349 773, N838 507
Ground Level Elevation:	375m AOD
Camera Height:	1.5m AGL
Direction of view to site centre ³ :	224°
Distance to nearest turbine:	7,208m
Number of blade tips theoretically visible ⁴ :	14
Number of hubs theoretically visible ⁴ :	14
Date and time of viewpoint photography:	16/09/2021 @ 16:15
Camera:	Canon EOS 5D Mk2
Lens:	50mm (Canon EF 50mm f/1.8)

Information on the limitations of visualisations:

Visualisations of wind farms have a number of limitations which you should be aware of when using them to form a judgement on a wind farm proposal. These include:

- A visualisation can never show exactly what the wind farm will look like in reality due to factors such as: different lighting, weather and seasonal conditions which vary through time and the resolution of the image;
- The images provided give a reasonable impression of the scale of the turbines and the distance to the turbines, but can never be 100% accurate;
- A static image cannot convey turbine movement, or flicker or reflection from the sun on the turbine blades as they move;
- The viewpoints illustrated are representative of views in the area, but cannot represent visibility at all locations;
- To form the best impression of the impacts of the wind farm proposal these images are best viewed at the viewpoint location shown;
- The images must be printed at the right size to be viewed properly (260mm by 820mm);
- You should hold the images flat at a comfortable arm's length. If viewing these images on a wall or board at an exhibition, you should stand at arm's length from the image presented.
- The ZTV presented here takes no account of the screening effects of vegetation or buildings.

Additional notes:

1. This figure has been based on the following parameters:
Turbine layout file: CLASHINDARROCH II.WFL
 - Hub height: 110m
 - Rotor diameter: 140m
 - Height to blade tip: 180m
2. Turbine positions could be subject to micro-siting (typically up to 50m).
3. Direction given as bearing relative to Grid North (BNG).
4. The number of turbine blades and hubs theoretically visible is counted from the wireframe in sets of 3 and ignores the screening effects of any intervening objects and forestry.
5. This figure is produced in accordance with SNH Visual Representation of Wind Farms 2017 guidance and also broadly accords with the Landscape Institute's Technical Guidance Note 6/19 (Type 4 Visualisation).

Client

Clashindarroch II Wind Farm
Supplementary Information

**SI 2021 Figure 7.10a
Viewpoint 6: Clashmach Hill**

October 2021

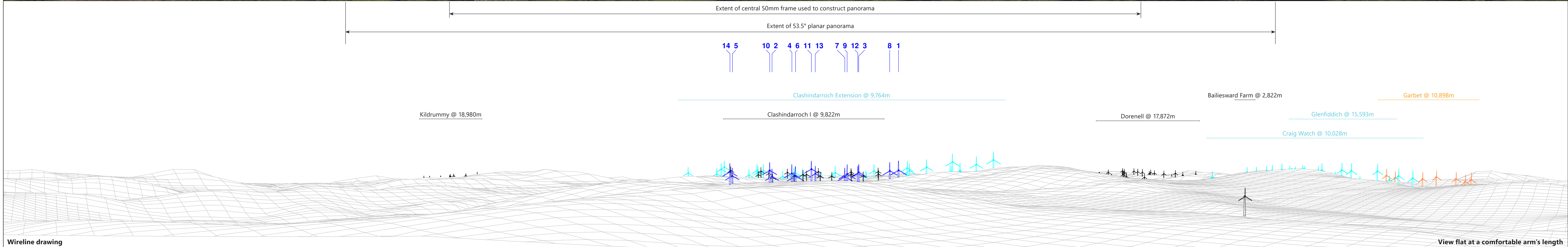
© Crown copyright. All rights reserved. Licence number 0100051659.

H:\Data\Projects\807772 - Clashindarroch 2\Wind Farm\Deliver Stage\0 Design_Technical Drawings\Figure 7.10 VP6 Clashmach 807772\W000-FG-SA-0006_R3.indd Originator: wils03



Baseline photograph

This image provides landscape and visual context only



Wireline drawing

View flat at a comfortable arm's length

Wind Farm Key: ⬆ Clashindarroch II Wind Farm ⬆ Existing ⬆ Consented ⬆ Application ⬆ Scoping

OS reference:	E349 773, N838 507	Horizontal field of view:	90° (cylindrical projection)	Camera:	Canon EOS 5D Mk2
Eye level:	376.5m AOD	Principal distance:	522mm	Lens:	50mm (Canon EF 50mm f/1.8)
Direction of view:	223°	Paper size:	841mm x 297mm (half A1)	Camera height:	1.5m AGL
Nearest turbine:	7,208m	Correct printed image size:	820 x 130mm	Date and time:	16/09/2021 16:15

Client
VATTENFALL

Clashindarroch II Wind Farm
Supplementary Information

SI 2021 Figure 7.10b
Viewpoint 6: Clashmach Hill

October 2021



14 5 10 2 4 6 11 13 7 9 12 3 8 1

Clashindarroch Extension @ 9,764m

Bailiesward Farm @ 2,822m

Kildrummy @ 18,980m






Clashindarroch I @ 9,822m

Dorenell @ 17,872m

Craig Watch @ 10,028m

H:\Data\Projects\807772 - Clashindarroch II Wind Farm\Deliver Stage\0 Design - Technical\Drawings\Figure 7.10 VP6 Clashmach 807772 - WOOD-FG-SA-0006_P3.indd Originator: wilc03

Wireline drawing

Wind Farm Key:  Clashindarroch II Wind Farm  Existing  Consented  Application  Scoping

OS reference:	E349 773, N838 507	Horizontal field of view:	53.5° (planar projection)	Camera:	Canon EOS 5D Mk2
Eye level:	376.5m AOD	Principal distance:	812.5mm	Lens:	50mm (Canon EF 50mm f/1.8)
Direction of view:	223°	Paper size:	841mm x 297mm (half A1)	Camera height:	1.5m AGL
Nearest turbine:	7,208m	Correct printed image size:	820 x 260mm	Date and time:	16/09/2021 16:15



Client
Clashindarroch II Wind Farm
Supplementary Information

SI 2021 Figure 7.10c
Viewpoint 6: Clashmach Hill

View flat at a comfortable arm's length

October 2021



H:\Data\Projects\807772 - Clashindarroch 2 Wind Farm\Deliver Stage\3D Design - Technical\Drawings\Figure 7.10 V6 Clashmach 807772 WOOD-FG-SA-00016_RS.indd Originator: wils03



Photomontage

View flat at a comfortable arm's length

OS reference:	E349 773, N838 507	Horizontal field of view:	53.5° (planar projection)	Camera:	Canon EOS 5D Mk2
Eye level:	376.5m AOD	Principal distance:	812.5mm	Lens:	50mm (Canon EF 50mm f/1.8)
Direction of view:	223°	Paper size:	841mm x 297mm (half A1)	Camera height:	1.5m AGL
Nearest turbine:	7,208m	Correct printed image size:	820 x 260mm	Date and time:	16/09/2021 16:15

Client
VATTENFALL 

Clashindarroch II Wind Farm
Supplementary Information

SI 2021 Figure 7.10d
Viewpoint 6: Clashmach Hill

October 2021


wood.