



Viewpoint Parameters

OS reference:	E355 835, N849 580
Ground Level Elevation:	140m AOD
Camera Height:	1.5m AGL
Direction of view to site centre ³ :	215°
Distance to nearest lit turbine:	19,682m
Number of nacelle lighting units theoretically visible ⁴ :	2
Date and time of viewpoint photography:	11/09/2019 @ 20:15
Camera:	Nikon D600
Lens:	Nikon 50mm f/1.8

Information on the limitations of visualisations:

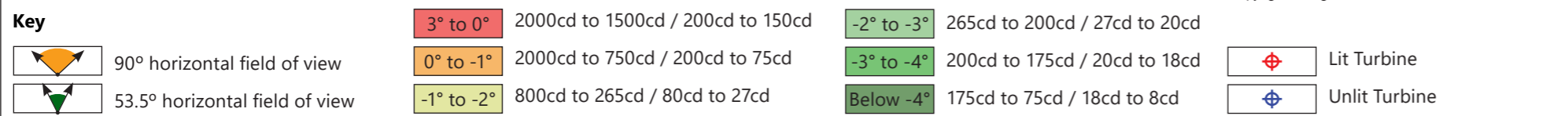
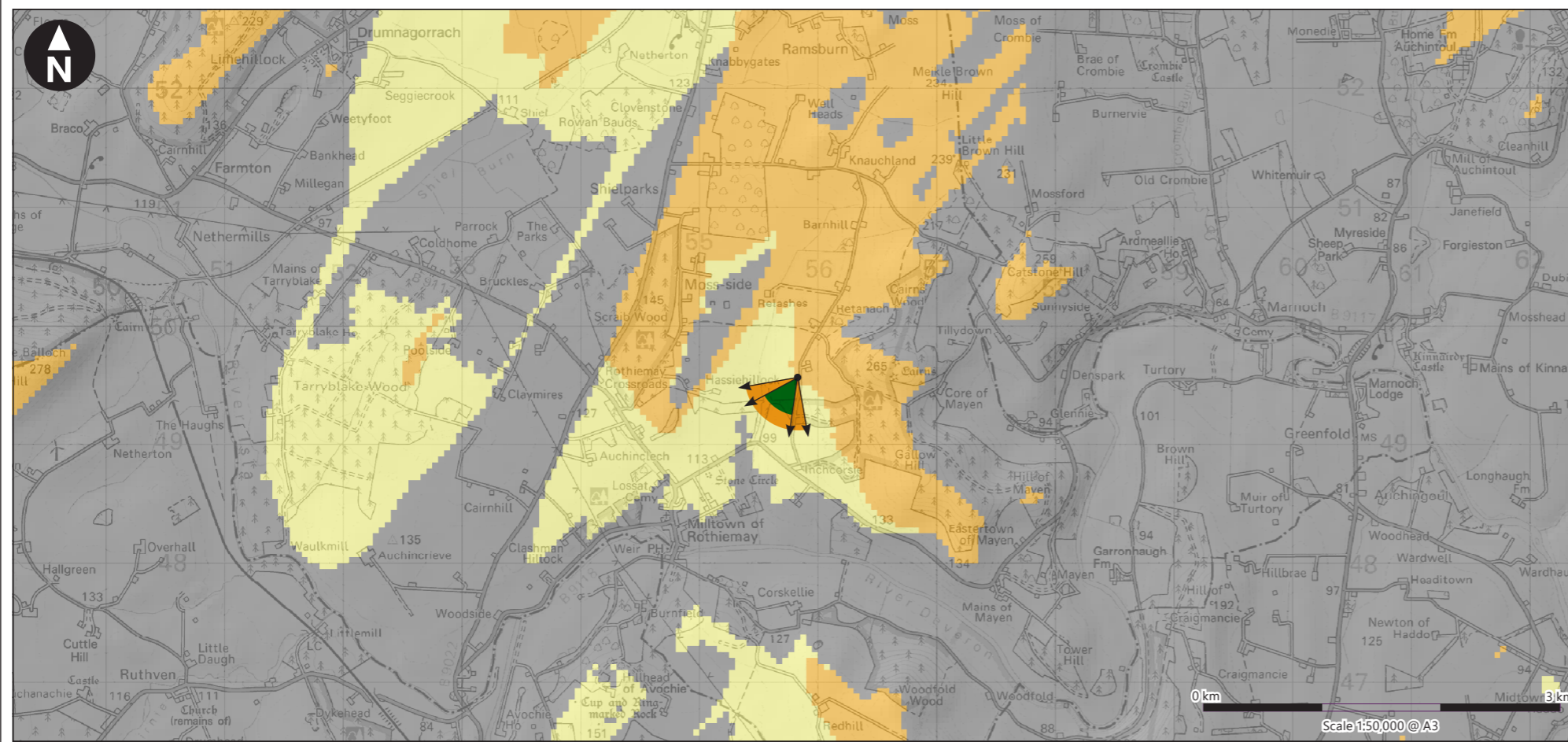
Visualisations of wind farms have a number of limitations which you should be aware of when using them to form a judgement on a wind farm proposal. These include:

- A visualisation can never show exactly what the wind farm will look like in reality due to factors such as: different lighting, weather and seasonal conditions which vary through time and the resolution of the image;
- The images provided give a reasonable impression of the scale of the turbines and the distance to the turbines, but can never be 100% accurate;
- A static image cannot convey turbine movement, or flicker or reflection from the sun on the turbine blades as they move;
- The viewpoints illustrated are representative of views in the area, but cannot represent visibility at all locations;
- To form the best impression of the impacts of the wind farm proposal these images are best viewed at the viewpoint location shown;
- The images must be printed at the right size to be viewed properly (260mm by 820mm);
- You should hold the images flat at a comfortable arm's length. If viewing these images on a wall or board at an exhibition, you should stand at arm's length from the image presented.
- The ZTV presented here takes no account of the screening effects of vegetation or buildings.

Additional notes:

1. This figure has been based on the following parameters:
Turbine layout file: CLASHINDARROCH II.WFL
 - Hub height: 110m
 - Rotor diameter: 140m
 - Height to blade tip: 180m
2. Turbine positions could be subject to micro-siting (typically up to 50m).
3. Direction given as bearing relative to Grid North (BNG).
4. The number of turbine blades and hubs theoretically visible is counted from the wireframe in sets of 3 and ignores the screening effects of any intervening objects and forestry.

5. This figure is produced in accordance with SNH Visual Representation of Wind Farms 2017 guidance and also broadly accords with the Landscape Institute's Technical Guidance Note 6/19 (Type 4 Visualisation).



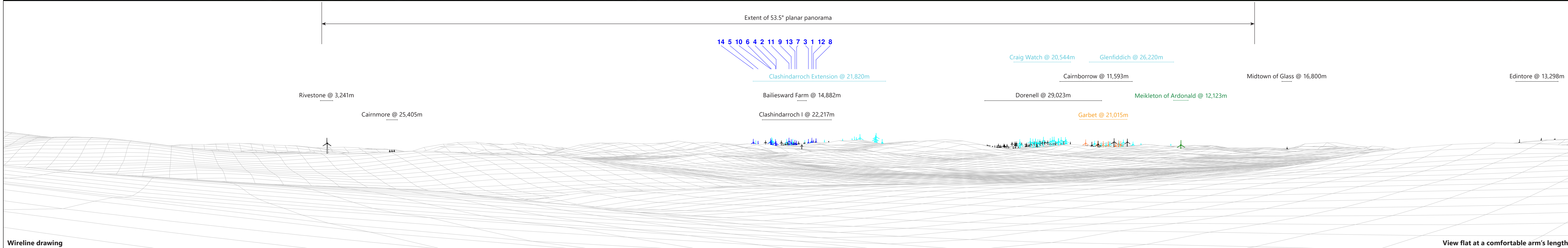
Client	
Clashindarroch II Wind Farm Supplementary Information	
SI 2021 Figure 7.14a Viewpoint N9: Minor Road off B9117 near Milltown of Rothiemay	
October 2021	

H:\Data\Projects\807772 - Clashindarroch 2 Wind Farm\Deliver Stage\Design Technical Drawings\Figure 7.14 VP N9 Minor Road B9117 Rothiemay 807772-WOOD-FG-SA-0025_R1.mxd Originator: wilc03



Baseline photograph

This image provides landscape and visual context only



Wireline drawing

View flat at a comfortable arm's length

Note: Turbines 1, 5, 6, and 12 would be fitted with aviation warning lights positioned on the turbine hub or nacelle

Wind Farm Key: ⬆ Clashindarroch II Wind Farm ⬆ Existing ⬆ Consented ⬆ Application ⬆ Scoping

OS reference:	E355 835, N849 580	Horizontal field of view:	90° (cylindrical projection)	Camera:	Nikon D600
Eye level:	141.5m AOD	Principal distance:	522mm	Lens:	Nikon 50mm f/1.8
Direction of view:	215°	Paper size:	841mm x 297mm (half A1)	Camera height:	1.5m AGL
Nearest lit turbine:	19,682m	Correct printed image size:	820 x 130mm	Date and time:	11/09/2019 20:15



Client
Clashindarroch II Wind Farm
Supplementary Information

SI 2021 Figure 7.14b
Viewpoint N9:
Minor Road off B9117
near Milltown of Rothiemay

October 2021



H:\Data\Projects\80772 - Clashindarroch 2 Wind Farm\Deliver Stage\0 Design - Technical\Drawings\Figure 7.14 VP19 Minor Road B9117 Rothiemay 80772 - WOOD-FG-SA-0025_R1.indd Originator: wils03



Photomontage (2000cd Intensity Lighting)

Note: The light intensity at this location would be between 2000-750cd during periods of poor visibility in any direction within 5km. The photomontage provides an impression of the proposed lighting intensity at 2000cd and assumes clear visibility from the viewpoint location.

OS reference:	E355 835, N849 580	Horizontal field of view:	53.5° (planar projection)	Camera:	Nikon D600
Eye level:	141.5m AOD	Principal distance:	812.5mm	Lens:	Nikon 50mm f/1.8
Direction of view:	215°	Paper size:	841mm x 297mm (half A1)	Camera height:	1.5m AGL
Nearest lit turbine:	19,682m	Correct printed image size:	820 x 260mm	Date and time:	11/09/2019 20:15



Client
Clashindarroch II Wind Farm
Supplementary Information

SI 2021 Figure 7.14c
Viewpoint N9:
Minor Road off B9117
near Milltown of Rothiemay

October 2021



View flat at a comfortable arm's length

H:\Data\Projects\80772 - Clashindarroch 2 Wind Farm\Deliver Stage\0 Design - Technical\Drawings\Figure 7.14 VP19 Minor Road B9117 Rothiemay 80772 - WOOD-FG-SA-0025_R1.mxd Originator: wils03



Photomontage (200cd Intensity Lighting) View flat at a comfortable arm's length

Note: The light intensity at this location would be between 200-75cd during periods when the visibility is clear for 5km in all directions from the light source. The photomontage provides an impression of the proposed lighting intensity at 200cd and assumes clear visibility from the viewpoint location.

OS reference:	E355 835, N849 580	Horizontal field of view:	53.5° (planar projection)	Camera:	Nikon D600
Eye level:	141.5m AOD	Principal distance:	812.5mm	Lens:	Nikon 50mm f/1.8
Direction of view:	215°	Paper size:	841mm x 297mm (half A1)	Camera height:	1.5m AGL
Nearest lit turbine:	19,682m	Correct printed image size:	820 x 260mm	Date and time:	11/09/2019 20:15

Client
VATTENFALL 

Clashindarroch II Wind Farm
 Supplementary Information

SI 2021 Figure 7.14d
Viewpoint N9:
Minor Road off B9117
near Milltown of Rothiemay

October 2021 

