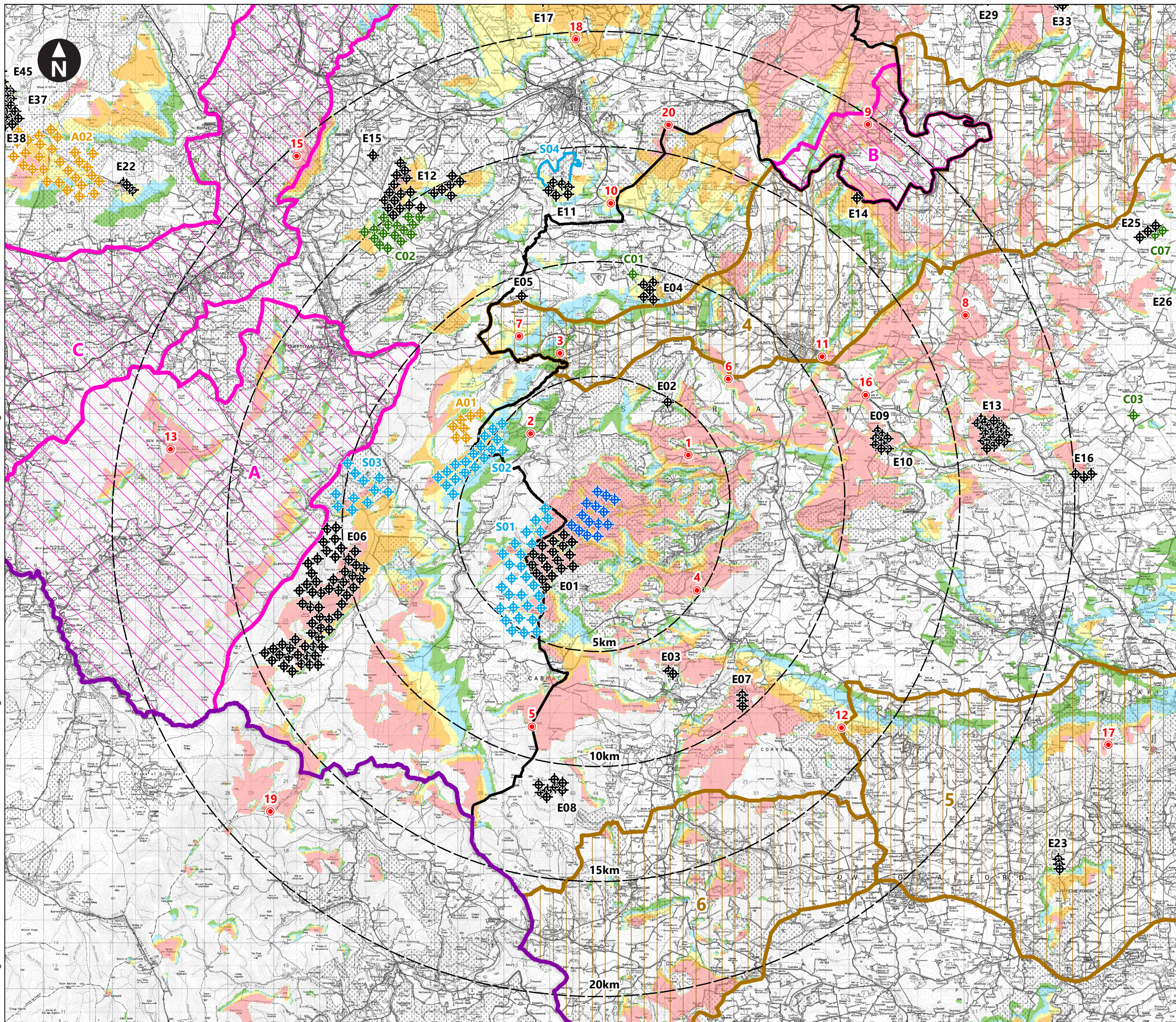


C:\Users\craig.wilson\Documents\ArcGIS\Clashindarroch II\ArcGIS\MXD\Figure 7.4a ZTV BT 20km 807772-WOOD-FG-SA-00004\_RS.mxd Originator: wilsc03



Key

- Proposed turbine locations
- Local authority boundaries
- Lines indicating the distance from the proposed turbine locations
- Cairngorms National Park
- LVIA viewpoint locations
- Note: For viewpoint codes please see SI 2021 Figure 7.2
- Moray Special Landscape Areas  
A) Ben Rinnes    B) Deveron Valley    C) Spey Valley
- Aberdeenshire Special Landscape Areas  
4) Deveron Valley    5) Bennachie    6) Upper Don Valley
- 1-3 turbines may be theoretically visible
- 4-6 turbines may be theoretically visible
- 7-9 turbines may be theoretically visible
- 10-12 turbines may be theoretically visible
- 13-14 turbines may be theoretically visible

Notes: For cumulative wind farm codes please see SI 2021 Figure 7.1a.

This drawing is based on a computer generated Zone of Theoretical Visibility (ZTV). The areas shown indicate the maximum theoretical visibility of the proposed turbines using OS Terrain 50 data only and do not take account of any screening from vegetation or built-form. The ZTV also includes an adjustment that allows for the Curvature and Light Refraction of the Earth.

This figure has been based on the following parameters:

- Turbine layout file: CLASHINDARROCH II.WFL
- Hub height: 110m
- Rotor diameter: 140m
- Height to blade tip: 180m

0 1 2 3 4 5 6 7 8 9 10 km  
Scale at A3: 1:160,000  
© Crown Copyright. All rights reserved. Licence number AL100001776.

Client

**VATTENFALL**

Clashindarroch II Wind Farm  
Supplementary Information

SI 2021 Figure 7.4a  
Landscape Planning Designations  
and Zone of Theoretical Visibility  
to Blade Tip within 20km