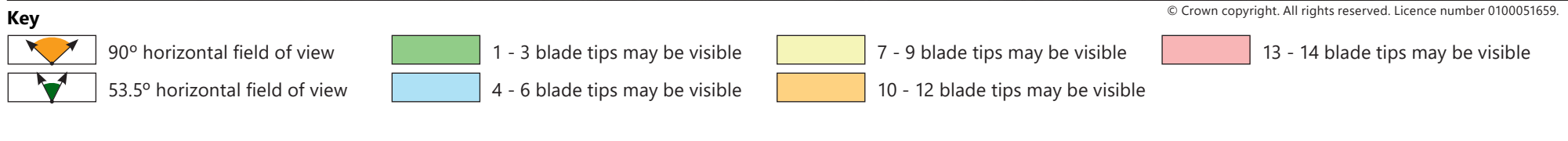
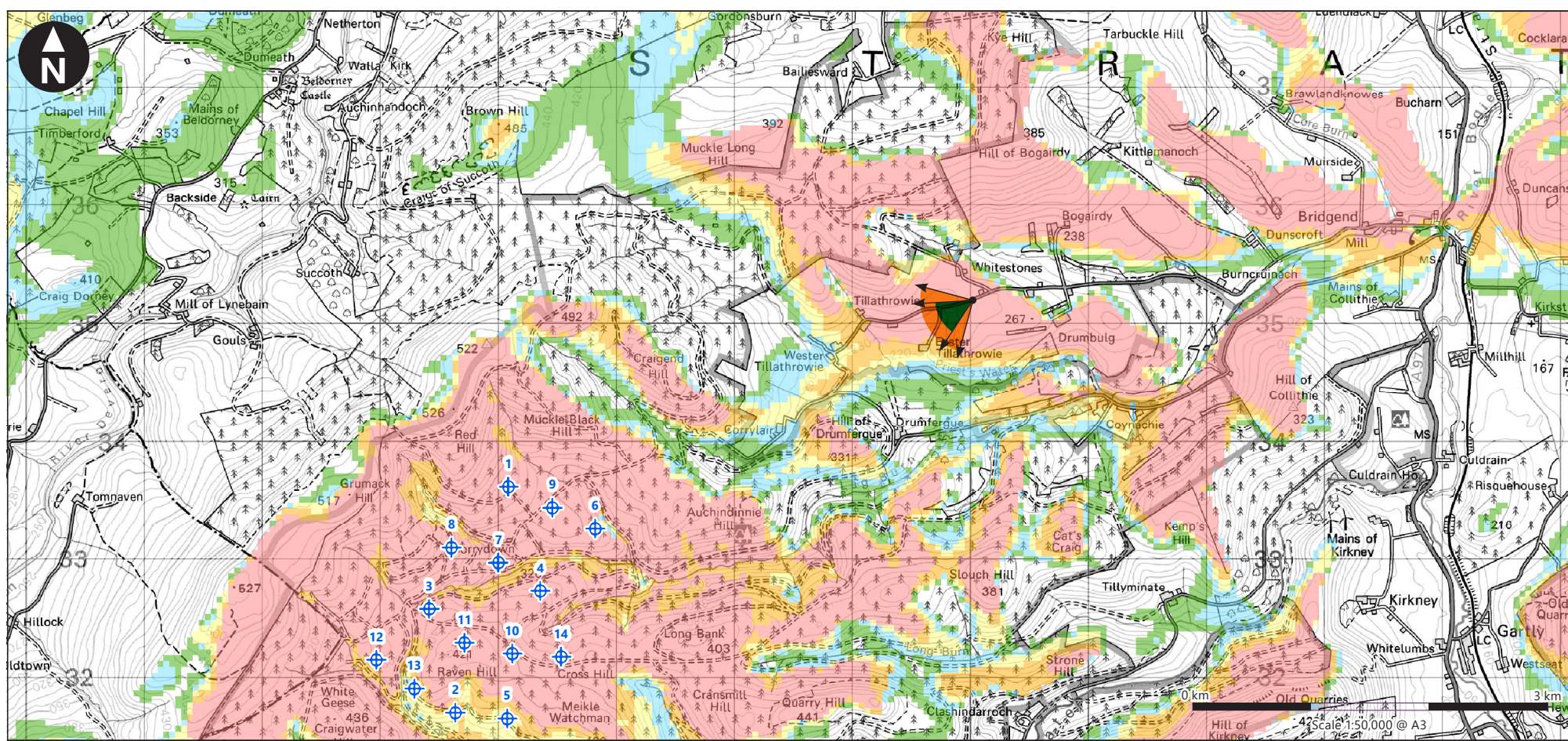
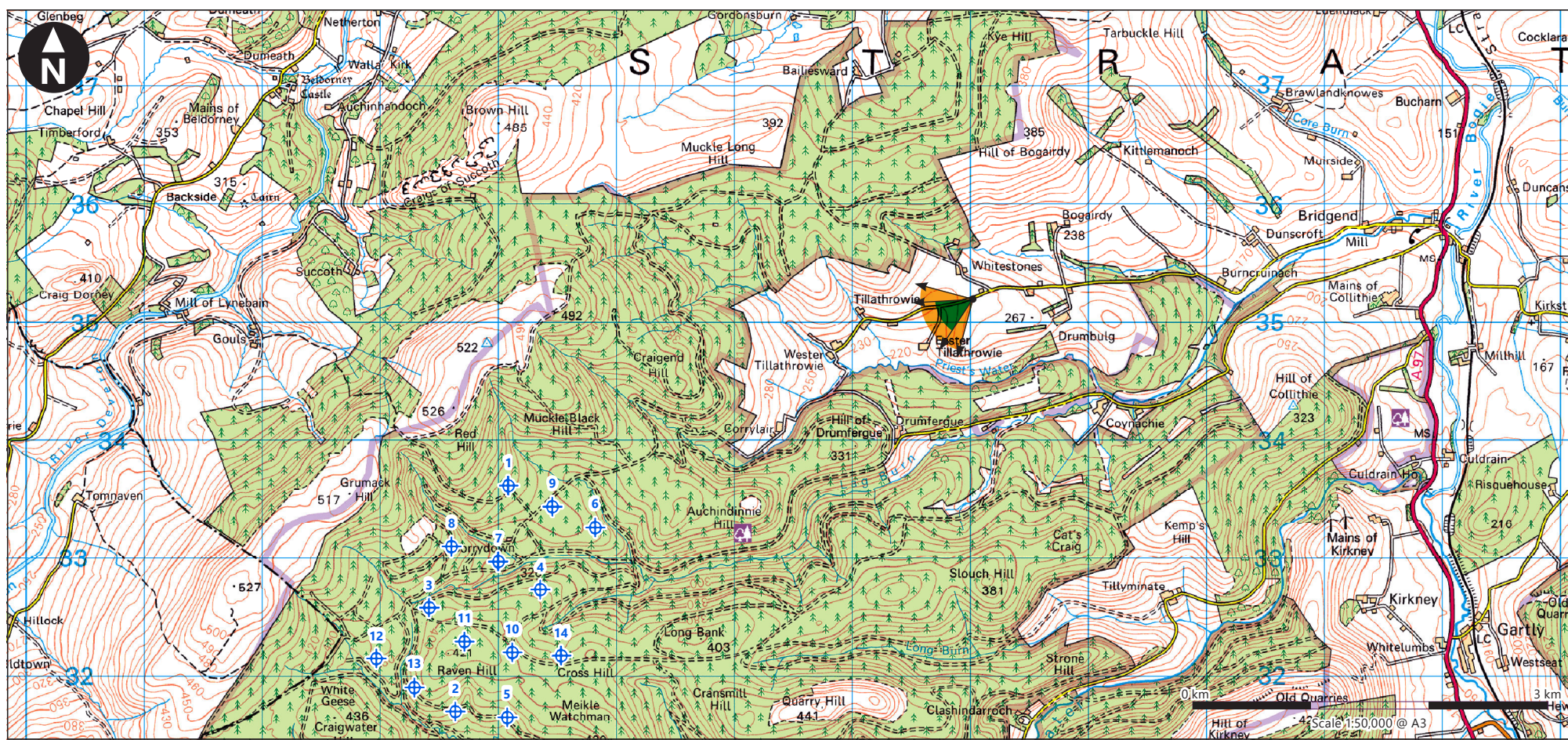


H:\data\Projects\807772 - Clashindarroch 2 Wind Farm\Deliverables\Stage 2\Drawings\Figure 7.7 VP1 Tillathrowie\WOOD-FG-SA-00013_R8.mxd Originator: wilsc03



Viewpoint Parameters

OS reference:	E348 025, N835 192
Ground Level Elevation:	267m AOD
Camera Height:	1.5m AGL
Direction of view to site centre ³ :	237°
Distance to nearest turbine:	3,737m
Number of blade tips theoretically visible ⁴ :	14
Number of hubs theoretically visible ⁴ :	13
Date and time of viewpoint photography:	13/09/2019 @ 11:00
Camera:	Nikon D600
Lens:	Nikon 50mm f/1.8

Information on the limitations of visualisations:

Visualisations of wind farms have a number of limitations which you should be aware of when using them to form a judgement on a wind farm proposal. These include:

- A visualisation can never show exactly what the wind farm will look like in reality due to factors such as: different lighting, weather and seasonal conditions which vary through time and the resolution of the image;
- The images provided give a reasonable impression of the scale of the turbines and the distance to the turbines, but can never be 100% accurate;
- A static image cannot convey turbine movement, or flicker or reflection from the sun on the turbine blades as they move;
- The viewpoints illustrated are representative of views in the area, but cannot represent visibility at all locations;
- To form the best impression of the impacts of the wind farm proposal these images are best viewed at the viewpoint location shown;
- The images must be printed at the right size to be viewed properly (260mm by 820mm);
- You should hold the images flat at a comfortable arm's length. If viewing these images on a wall or board at an exhibition, you should stand at arm's length from the image presented.
- The ZTV presented here takes no account of the screening effects of vegetation or buildings.

Additional notes:

1. This figure has been based on the following parameters:
Turbine layout file: CLASHINDARROCH II.WFL
 - Hub height: 110m
 - Rotor diameter: 140m
 - Height to blade tip: 180m
2. Turbine positions could be subject to micro-siting (typically up to 50m).
3. Direction given as bearing relative to Grid North (BNG).
4. The number of turbine blades and hubs theoretically visible is counted from the wireframe in sets of 3 and ignores the screening effects of any intervening objects and forestry.
5. This figure is produced in accordance with SNH Visual Representation of Wind Farms 2017 guidance and also broadly accords with the Landscape Institute's Technical Guidance Note 6/19 (Type 4 Visualisation).

Client

Clashindarroch II Wind Farm
Supplementary Information

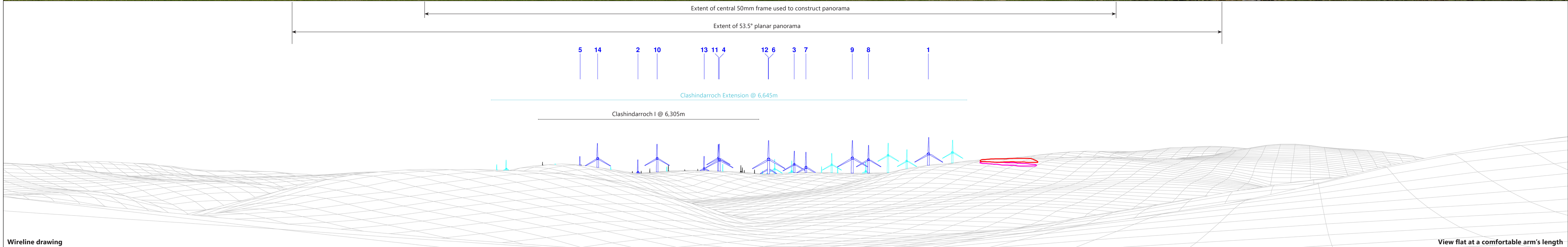
SI 2021 Figure 7.7a
Viewpoint 1: Minor Road near Tillathrowie

H:\Data\Projects\807772 - Clashindarroch 2 Wind Farm\Deliver Stage\3D Design - Technical Drawings\Figure 7.7 VPT Tillathrowie 807772-WOOD-FG-SA-00013_R6.indd Originator: wis03



Baseline photograph

This image provides landscape and visual context only



Wireline drawing

View flat at a comfortable arm's length

Wind Farm Key:

- ✦ Clashindarroch II Wind Farm
- ✦ Existing
- ✦ Consented
- ✦ Application
- ✦ Scoping
- Existing Borrow Pit
- New Borrow Pit

OS reference:	E348 025, N835 192	Horizontal field of view:	90° (cylindrical projection)	Camera:	Nikon D600
Eye level:	268.5m AOD	Principal distance:	522mm	Lens:	Nikon 50mm f/1.8
Direction of view:	240°	Paper size:	841mm x 297mm (half A1)	Camera height:	1.5m AGL
Nearest turbine:	3,737m	Correct printed image size:	820 x 130mm	Date and time:	13/09/2019 11:00

Client
VATTENFALL

Clashindarroch II Wind Farm
 Supplementary Information

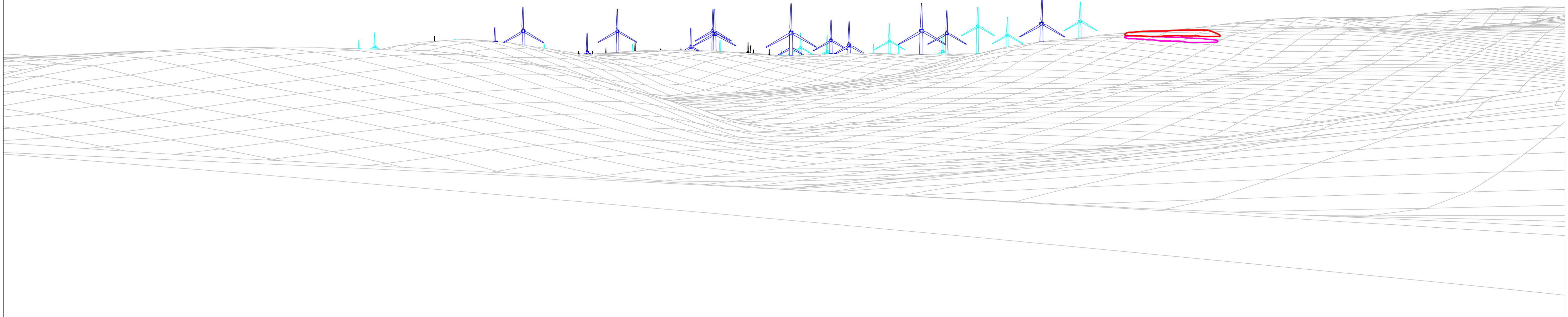
SI 2021 Figure 7.7b
 Viewpoint 1: Minor Road near Tillathrowie

October 2021

5 14 2 10 13 11 4 12 6 3 7 9 8 1

Clashindarroch Extension @ 6,645m

Clashindarroch I @ 6,305m



Wireline drawing

Wind Farm Key: Clashindarroch II Wind Farm Existing Consented Application Scoping Existing Borrow Pit New Borrow Pit

OS reference:	E348 025, N835 192	Horizontal field of view:	53.5° (planar projection)	Camera:	Nikon D600
Eye level:	268.5m AOD	Principal distance:	812.5mm	Lens:	Nikon 50mm f/1.8
Direction of view:	240°	Paper size:	841mm x 297mm (half A1)	Camera height:	1.5m AGL
Nearest turbine:	3,737m	Correct printed image size:	820 x 260mm	Date and time:	13/09/2019 11:00

Client
VATTENFALL

Clashindarroch II Wind Farm
Supplementary Information

SI 2021 Figure 7.7c
Viewpoint 1: Minor Road near Tillathrowie

October 2021

wood.

View flat at a comfortable arm's length

H:\Data\Projects\807772 - Clashindarroch II Wind Farm\Deliver Stage\0 Design - Technical\Drawings\Figure 7.7 VPI Tillathrowie 807772-WOOD-FG-SA-00013_R6.indd Originator: wis03

H:\Data\Projects\807772 - Clashindarroch II Wind Farm\Deliver Stage\3D Design - Technical\Drawings\Figure 7.7 VPI Tillathrowie 807772-WOOD-FG-SA-00013_R6.indd Originator: wis03



Photomontage

Notes: The proposed borrow pit has been montaged onto the existing view, extending the existing borrow pit. Additional forestry has also been montaged with the replanted new trees, dated at Year 1.

OS reference:	E348 025, N835 192	Horizontal field of view:	53.5° (planar projection)	Camera:	Nikon D600
Eye level:	268.5m AOD	Principal distance:	812.5mm	Lens:	Nikon 50mm f/1.8
Direction of view:	240°	Paper size:	841mm x 297mm (half A1)	Camera height:	1.5m AGL
Nearest turbine:	3,737m	Correct printed image size:	820 x 260mm	Date and time:	13/09/2019 11:00

Client
VATTENFALL 

Clashindarroch II Wind Farm
Supplementary Information

SI 2021 Figure 7.7d
Viewpoint 1: Minor Road near Tillathrowie

October 2021




View flat at a comfortable arm's length