

- Legend**
- View Arcs used for Viewpoint Visualisations**
- ▶ Panorama / Cumulative Wireline (90°)
  - ▶ Photomontage / Wireline (53.5°)

**OS Reference** E 349773 N 838507

**Elevation** 375 m AOD

**Nearest Turbine** 7.2 km

**Bearing to the Site** 224°

**Hubs Visible (110m)** 14 (of 14)

**Tips Visible (180m)** 14 (of 14)

**Viewpoint Description**

This viewpoint is located on the summit of Clashmach Hill. It is accessed on foot from a minor road off the A96, south west of Huntly. The footpath extends along a track from near the Tullochbeg property and then on the higher ground within open moorland to the summit and trig point.

**VATTENFALL**

**SLR**

4-5 LOCHSIDE VIEW  
EDINBURGH PARK  
EDINBURGH  
EH12 9DH

T: +44 (0)131 335 6830  
www.slrconsulting.com

1:25,000 @ A3

© Crown Copyright 2017. All rights reserved.  
Ordnance Survey Licence 0100031673.

0 0.25 0.5 1 Km

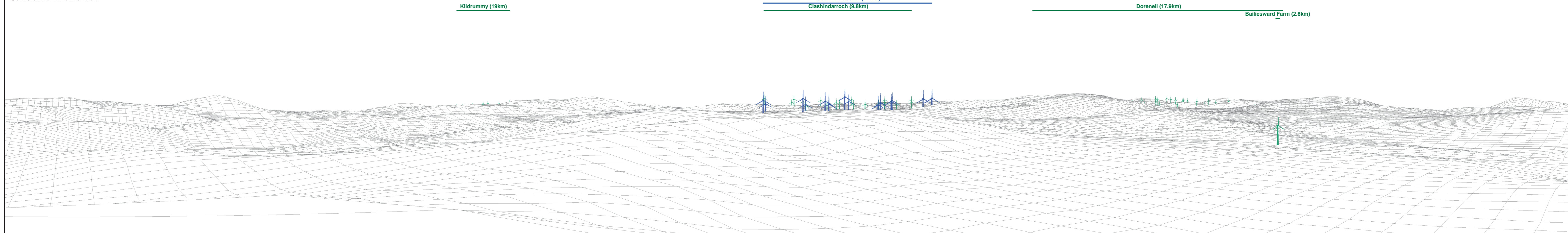
Clashindarroch II Wind Farm	
EIA Report	
<b>Viewpoint 6: Clashmach Hill</b>	
<b>Figure 7.27</b>	
Date: November 2019	Prepared By: MJF
Ref: 191202_3640_11_VP_Location Plans	





Extent of 53.5° planar panorama

Cumulative Wireline View



Kildrummy (19km)

Clashindarroch II (7.2km)  
Clashindarroch (9.8km)

Dorenell (17.9km)

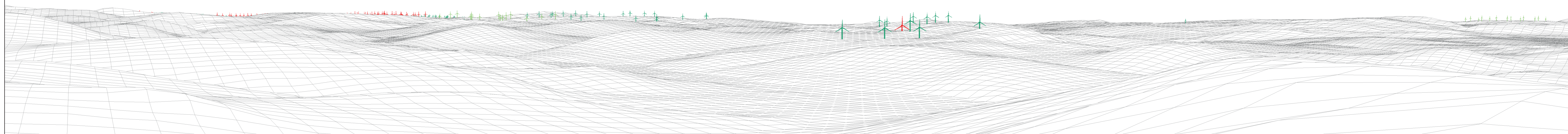
Bailliesward Farm (2.8km)

OS Reference	349773 E 838507 N	Direction of View	221°	Principal Distance	522 mm	Camera	Nikon D750					4-5 LOCHSIDE VIEW EDINBURGH PARK EDINBURGH EH12 9DH  T:+44 (0)131 335 6830 www.slrconsulting.com	Date: November 2019	Prepared By: MJF	Clashindarroch II Wind Farm	Viewpoint 6: Clashmach Hill Panorama with Cumulative Wireline (view 1 of 4)
Elevation	375 m AOD	Horizontal Field of View	90° (cylindrical projection)	Paper Size	841 x 297 mm (half A1)	Lens	Nikon 50mm f/1.4						Ref: 191202_3640_011_Large Format	EIA Report	Figure 7.27a	
Nearest Turbine	7.2 km	Camera Height	1.5 m AGL	Correct Printed Image Size	820 x 130 mm	Date & Time Taken	24/10/2018 10:41									



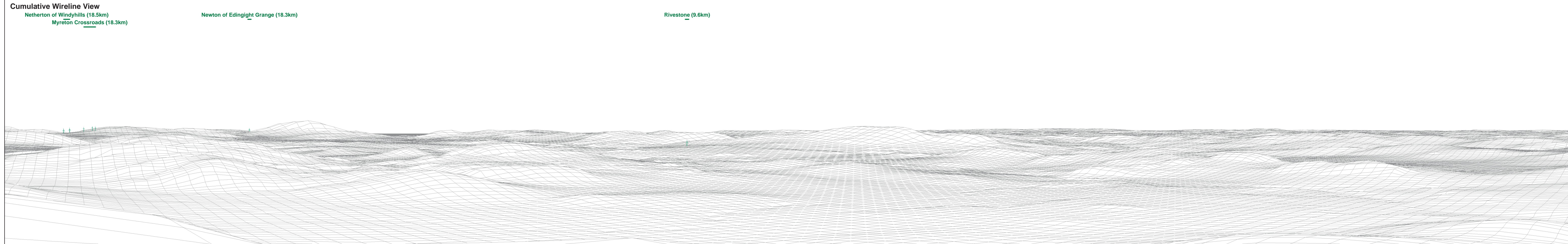


Cumulative Wireline View



OS Reference	349773 E 838507 N	Direction of View	311°	Principal Distance	522 mm	Camera	Nikon D750					4-5 LOCHSIDE VIEW EDINBURGH PARK EDINBURGH EH12 9DH  T:+44 (0)131 335 6830 www.slrconsulting.com	Date: November 2019	Prepared By: MJF	Clashindarroch II Wind Farm	Viewpoint 6: Clashmach Hill Panorama with Cumulative Wireline (view 2 of 4)
Elevation	375 m AOD	Horizontal Field of View	90° (cylindrical projection)	Paper Size	841 x 297 mm (half A1)	Lens	Nikon 50mm f/1.4						Ref: 191202_3640_011_Large Format	EIA Report	Figure 7.27b	
Nearest Turbine	7.2 km	Camera Height	1.5 m AGL	Correct Printed Image Size	820 x 130 mm	Date & Time Taken	24/10/2018 10:41									





**Cumulative Wireline View**  
 Netherton of Windyhills (18.5km)  
 Myreton Crossroads (18.3km)  
 Newton of Edingight Grange (18.3km)

Rivestone (9.6km)

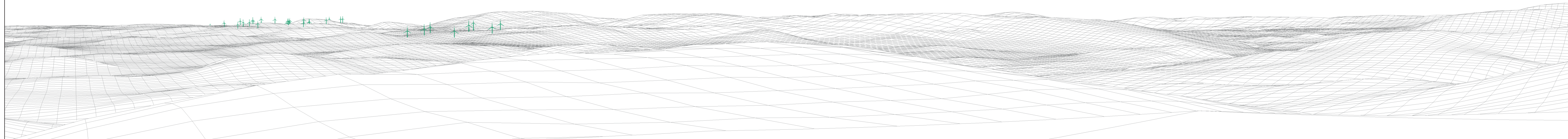
<p><b>OS Reference</b> 349773 E 838507 N</p> <p><b>Elevation</b> 375 m AOD</p> <p><b>Nearest Turbine</b> 7.2 km</p>	<p><b>Direction of View</b> 41°</p> <p><b>Horizontal Field of View</b> 90° (cylindrical projection)</p> <p><b>Camera Height</b> 1.5 m AGL</p>	<p><b>Principal Distance</b> 522 mm</p> <p><b>Paper Size</b> 841 x 297 mm (half A1)</p> <p><b>Correct Printed Image Size</b> 820 x 130 mm</p>	<p><b>Camera</b> Nikon D750</p> <p><b>Lens</b> Nikon 50mm f/1.4</p> <p><b>Date &amp; Time Taken</b> 24/10/2018 10:41</p>		<p>Proposed Development</p> <p>Operational Sites</p> <p>Consented Sites</p> <p>Application Sites</p>	<p><b>VATTENFALL</b></p>	<p><b>SLR</b></p>	<p>4-5 LOCHSIDE VIEW                  EDINBURGH PARK                  EDINBURGH                  EH12 9DH</p> <p>T: +44 (0)131 335 6830                  www.slrconsulting.com</p>	<p>Date: November 2019</p> <p>Prepared By: MJF</p> <p>Ref: 191202_3640_011_Large Format</p>	<p>Clashindarroch II Wind Farm</p> <p>EIA Report</p>	<p><b>Viewpoint 6: Clashmach Hill</b>                  Panorama with Cumulative Wireline (view 3 of 4)</p> <p><b>Figure 7.27c</b></p>
---	---	---	--	--	--	--------------------------	-------------------	--	---	--	---





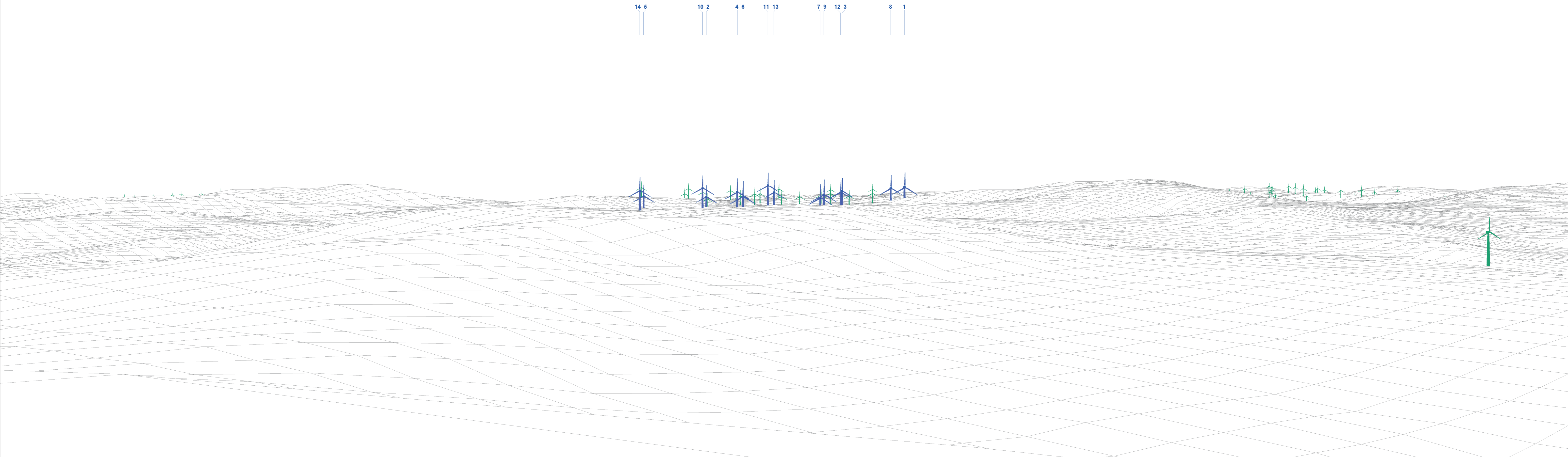
Cumulative Wireline View

Hill of Petty (24.5km)      Glens of Foudland (10.7km)      Hill of Tillymorgan (15.6km)      Dummuie (6.9km)  
 Meikle Folla (23.5km)      Crannabog Farm (23.6km)  
 Hill of Burns (24.8km)      Cowhill (25.3km)      Westerton Of Folla (21.9km)      Greenmyres (7.7km)  
 Mains of Meadaple (23.5km)

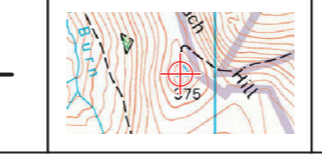
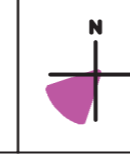


OS Reference	349773 E 838507 N	Direction of View	131°	Principal Distance	522 mm	Camera	Nikon D750					4-5 LOCHSIDE VIEW EDINBURGH PARK EDINBURGH EH12 9DH  T:+44 (0)131 335 6830 www.slrconsulting.com	Date: November 2019	Prepared By: MJF	Clashindarroch II Wind Farm	Viewpoint 6: Clashmach Hill Panorama with Cumulative Wireline (view 4 of 4)
Elevation	375 m AOD	Horizontal Field of View	90° (cylindrical projection)	Paper Size	841 x 297 mm (half A1)	Lens	Nikon 50mm f/1.4						Ref: 191202_3640_011_Large Format	EIA Report	Figure 7.27d	
Nearest Turbine	7.2 km	Camera Height	1.5 m AGL	Correct Printed Image Size	820 x 130 mm	Date & Time Taken	24/10/2018 10:41									





<b>OS Reference</b>	349773 E 838507 N	<b>Direction of View</b>	225°	<b>Principal Distance</b>	812.5 mm
<b>Elevation</b>	375 m AOD	<b>Horizontal Field of View</b>	53.5° (planar projection)	<b>Paper Size</b>	841 x 297 mm (half A1)
<b>Nearest Turbine</b>	7.2 km	<b>Camera Height</b>	1.5 m AGL	<b>Correct Printed Image Size</b>	820 x 260 mm



 Proposed Development 
  Operational Sites 
  Consented Sites 
  Application Sites



4-5 LOCHSIDE VIEW  
EDINBURGH PARK  
EDINBURGH  
EH12 9DH  
T: +44 (0)131 335 6830  
www.slrconsulting.com

Date: November 2019	Prepared By: MJF
Ref: 191202_3640_011_Large Format	

Clashindarroch II Wind Farm  
EIA Report

**Viewpoint 6: Clashmach Hill**  
Wireline  
**Figure 7.27e**





OS Reference	349773 E 838507 N	Direction of View	225°	Principal Distance	812.5 mm	Camera	Nikon D750				4-5 LOCHSIDE VIEW EDINBURGH PARK EDINBURGH EH12 9DH  T:+44 (0)131 335 6830 www.slrconsulting.com	Date: November 2019	Prepared By: MJF	Clashindarroch II Wind Farm	Viewpoint 6: Clashmach Hill Photomontage
Elevation	375 m AOD	Horizontal Field of View	53.5° (planar projection)	Paper Size	841 x 297 mm (half A1)	Lens	Nikon 50mm f/1.4					Ref: 191202_3640_011_Large Format	EIA Report	Figure 7.27f	
Nearest Turbine	7.2 km	Camera Height	1.5 m AGL	Correct Printed Image Size	820 x 260 mm	Date & Time Taken	24/10/2018 10:41								