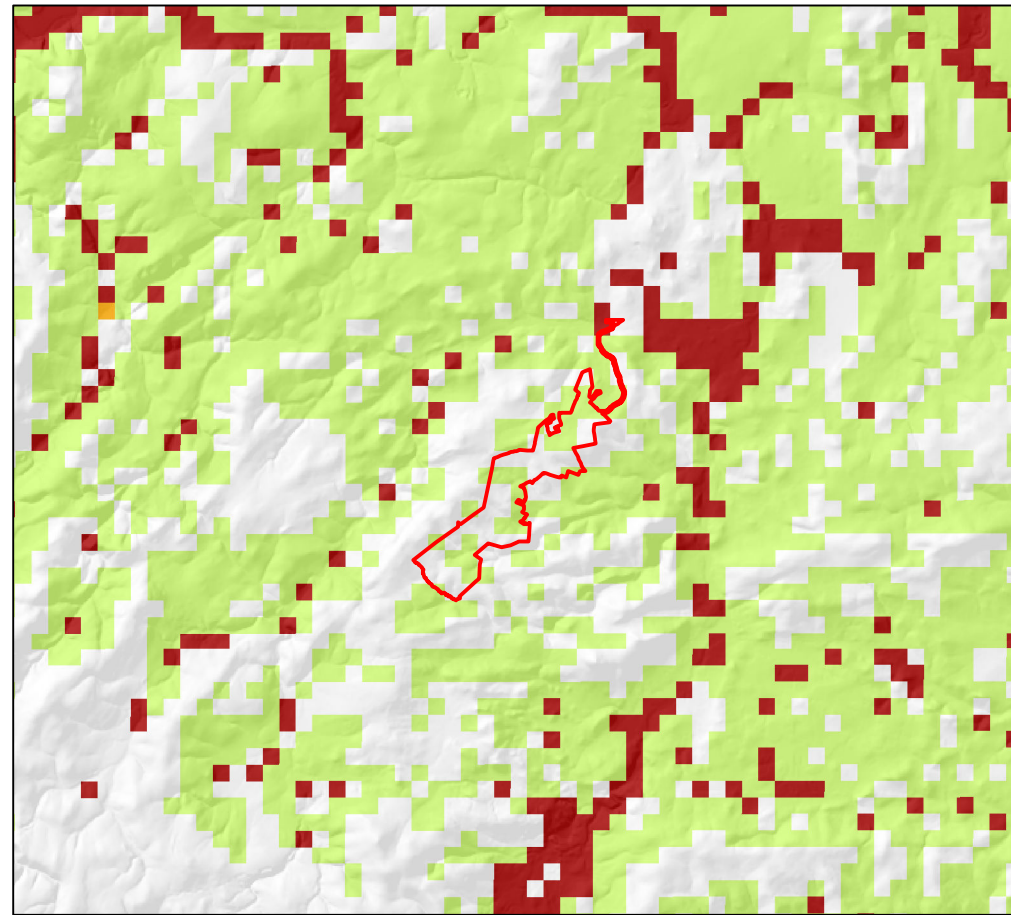


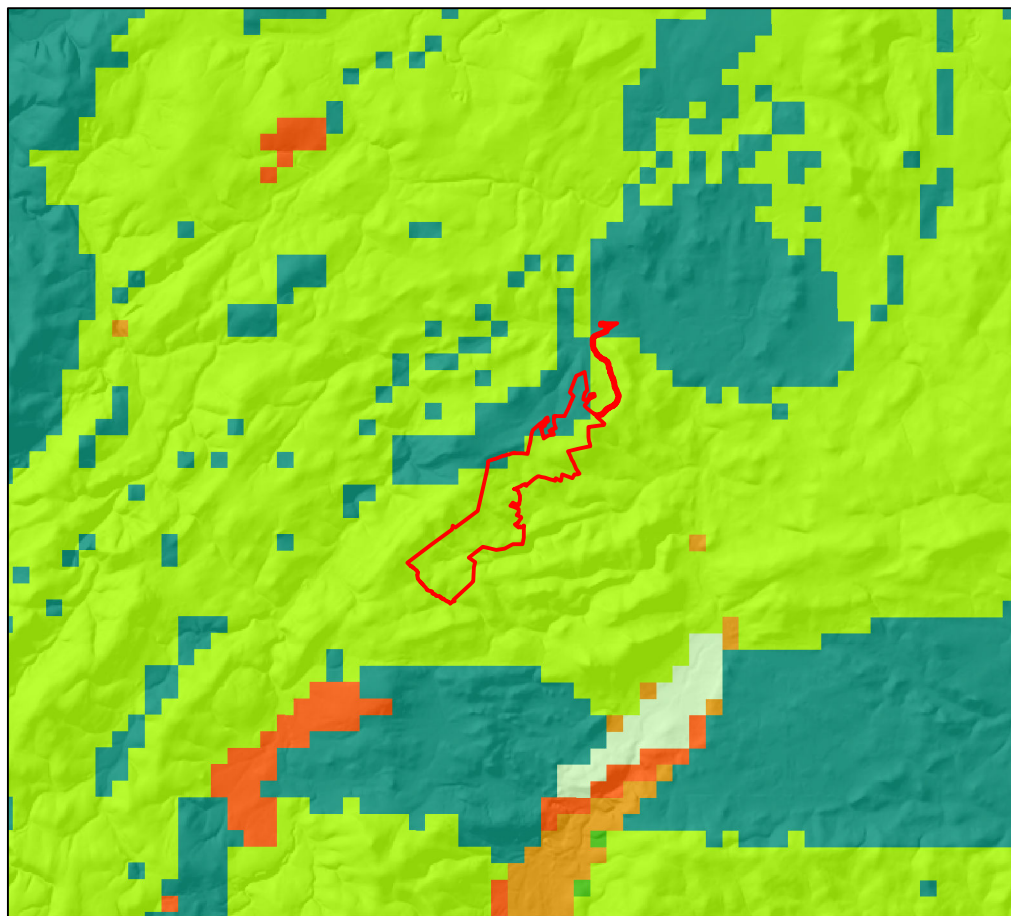
MAP EXTRACT

1:1,250,000 @ A3



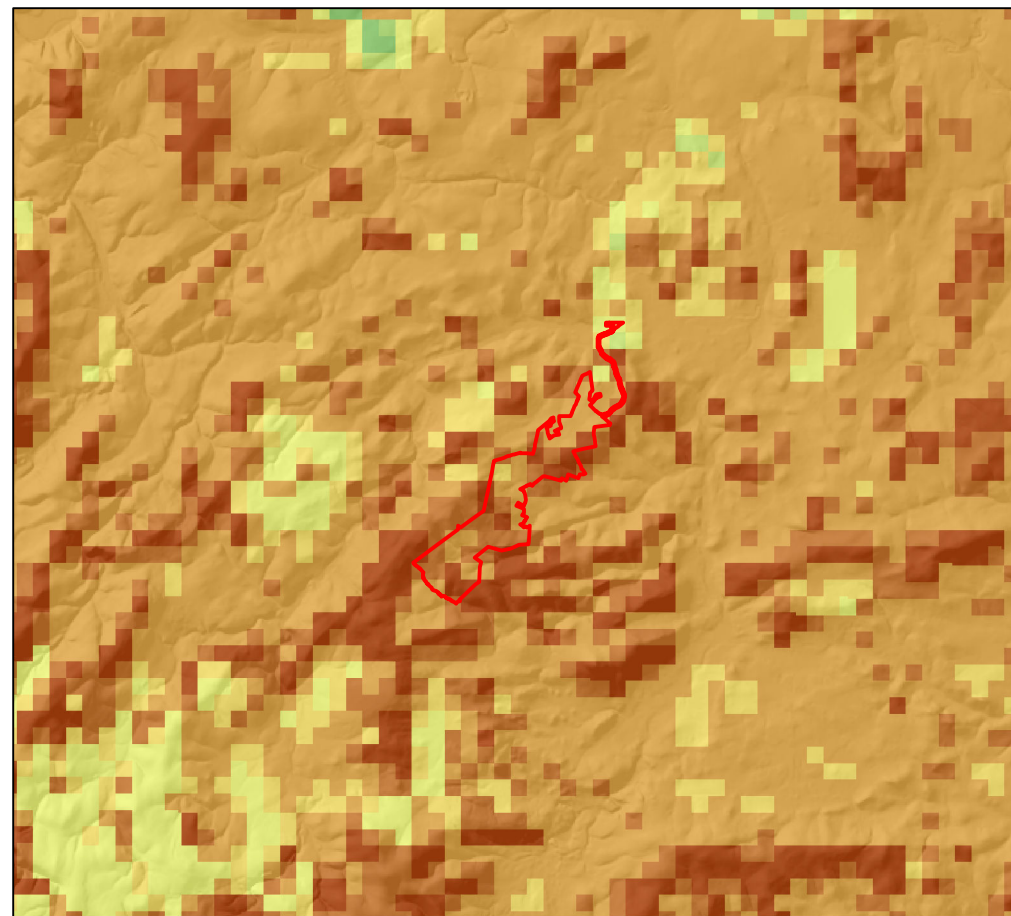
SUPERFICIAL AQUIFERS

1:250,000 @ A3



BEDROCK AQUIFERS

1:36,947 @ A3



GROUNDWATER VULNERABILITY IN THE UPPER MOST AQUIFER

1:250,000 @ A3

Legend

Site Boundary

Superficial Aquifers

I H
 I M
 I L
 H = High productivity
 M = Moderate productivity
 L = Low productivity

Bedrock Aquifers

DI VH
 IF VH
 DI H
 IF H
 IF M
 F M
 IF L
 F L
 IF VL
 F VL
 DI = Dominantly intergranular flow
 IF = Intergranular fracture flow
 I = Intergranular flow
 F = Fracture flow
 VH = Very High productivity
 H = High productivity
 M = Moderate productivity
 L = Low productivity
 VL = Very Low productivity

Groundwater Vulnerability in the Uppermost Aquifer

Vulnerability Class
 5 (Most vulnerable)
 4a
 4b
 4c
 4d
 3
 2
 1 (Least vulnerable)

Notes

1. © 2004 sniffer (maps produced by BGS/MI) includes material based on ordnance survey mapping with the permission of the controller of her Majesty's Stationary Office, Crown copyright. Licence number 0100031673

VATTENFALL

SLR

4/5 LOCHSIDE VIEW
 EDINBURGH PARK
 EDINBURGH
 EH12 9DH
 T: +44 (0)131 335 6830
 www.slrconsulting.com

1:250,000 @ A3

© Crown Copyright 2019. All rights reserved.
 Ordnance Surecy Licence 0100031673.



Clashindarroch II Wind Farm

EIA Report

Groundwater Vulnerability

Figure 11.6

Date: November 2019 | Prepared By: WR

Ref: CLON 11.6 Groundwater Vulnerability 190822wr