

# Musdale Wind Farm Proposal

Newsletter Spring 2021

Edinbane Wind Farm

## Work undertaken so far

Welcome to the second edition of the Musdale Wind Farm Newsletter from Vattenfall.

Vattenfall is in the early stages of design development and consultation for its Musdale Wind Farm proposal, approximately 5.5km south east of the village of Kilmore, near Oban.

### About the project

Musdale wind farm is a 26-turbine proposal which is in the early stages of design. It will utilise modern, efficient turbines with maximum blade tips of up to 200m in order to optimise the excellent wind resource available.

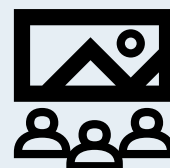
The site has long been identified for wind power generation and the surrounding landform helps contain the extent of visibility across the wider area. It also lies outwith any national or international designations.

Based on the initial 26-turbine layout and associated 156MW (megawatts) of installed capacity, the project would be capable of generating enough electricity to power the equivalent of approximately 118,000<sup>1</sup> homes with low-cost renewable energy.

### Scoping Report

In November 2020 we submitted a Scoping Report to the Scottish Government and other key consultees to identify and seek feedback on the scope of the Environmental Impact Assessment (EIA) survey work.

Responses to the Scoping Report were received from a wide range of key consultees, including local Community Councils, and have helped refine the EIA work which is now underway.



### Online exhibition and consultation

Shortly after submitting the Scoping Report, we launched an online exhibition and consultation to gather initial comments from the local community early on in the design process. We received a good level of feedback which is summarised overleaf.

This event is the first of several consultations to help keep the local community up to date and engaged with the project, and to help us understand people's views as the project progresses.

The feedback received from these consultations, together with findings from the EIA work, will help to inform the design and ensure that the local benefits to the area from the project are maximised.

<sup>1</sup> The 118,000 homes powered equivalent figure has been calculated using the Renewable UK industry standard calculation (and BEIS December 2020 annual UK average domestic household consumption figure of 3,578kWh): [www.renewableuk.com/page/UKWEExplained](http://www.renewableuk.com/page/UKWEExplained)

# Community comments

## Initial consultation feedback

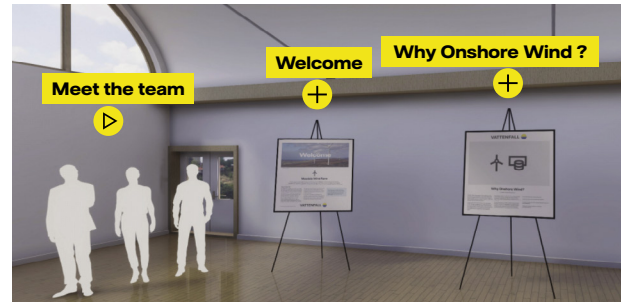
We recently held an online consultation to gather initial comments from the community early on in the design process.

### Summary of consultation event

On 8th December 2020 we launched an online exhibition and consultation to help raise awareness of the project and encourage the local community (and wider public) to share their views with us on the proposal at an early stage of design.

The online event, which was hosted on the Musdale project website, was advertised in advance in the local paper as well as via project newsletters which were sent out to over 1,600 households in the area.

A variety of information was presented in a virtual village hall, including: information boards covering key aspects of the proposal; site location and turbine layout maps; maps showing zones of theoretical visibility; wireline drawings giving an impression of what the site may look like from some local viewpoints; FAQs; and, an online feedback survey for people's comments.

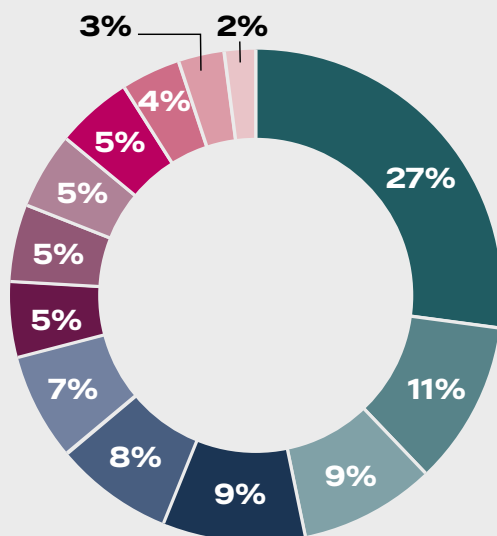


The exhibition also enabled people to book a 'one-to-one' call with the project team. Hard copies of all of the online exhibition information (including the Scoping Report) were also provided to people upon request.

The online exhibition and associated information remain accessible on the Musdale project website at [www.vattenfall.co.uk/musdale](http://www.vattenfall.co.uk/musdale).

### Comments received

More than 350 people<sup>2</sup> visited the online exhibition during the consultation period (8th December 2020 to 2nd February 2021) and a total of 30 people provided comments to Vattenfall. Over 100 topical comments were received, and the breakdown is shown below.



■ Socioeconomics ■ Ecology ■ Landscape & visual ■ Misc ■ Recreation & tourism ■ Traffic & transport ■ Grid connection ■ Ornithology ■ Noise ■ Cumulative ■ Cultural heritage ■ Consultation ■ Aviation lighting

Key themes arising out of the feedback were:

- **Socioeconomics:** high level of interest in local benefits and supply chain opportunities
- **Ecology:** strong interest in protecting wildlife, local habitats and environment in general
- **Landscape and visual:** concern about turbine heights and visual impact on landscape
- **Traffic and transport:** feedback on route options and concern about potential disruption
- **Recreation and tourism:** concern about potential impact to historic Midmuir drove road and any restriction of access during construction
- **Grid connection:** interest in grid route and concern about whether pylons would be required
- **Ornithology:** strong interest in protecting certain raptor species in the area

Approximately equal numbers of respondents appeared either supportive of the proposal or opposed to it at this early stage, with the remainder either neutral or not indicating a position.

<sup>2</sup> 358 'unique page views' (as defined by Google - Analytics)



# Local benefits

## Community benefit consultation

We are launching an online survey to gather initial thoughts and ideas on the potential benefits that Musdale Wind Farm could deliver to the local area.

### Vattenfall's approach

Vattenfall is a company of Swedish heritage, which is important to the way we approach our business and our work with communities. We have clear values and an ethos that places emphasis on working closely with local communities to make sure we are developing projects that can bring lasting, sustainable benefit to the community and future generations.

We take a measured, paced and timely approach to explore the views of the community in order to help shape the development and maximise its benefits.

### What is 'community benefit'?

Community benefit for onshore wind farms can take many forms but is typically delivered as an annual cash payment provided voluntarily by the developer to communities closest to the wind farm, for the operational lifetime of the project.

However, it is important to us and local communities that we maximise the economic opportunity the wind farm could provide for the local area. Other forms of community benefit include ensuring local jobs and contracts during construction and operation as well as offering shared ownership in the wind farm itself.

It is important to note that community benefit is a voluntary contribution by the developer. It is also important to note that community benefit funds are not a 'material' consideration in the planning process.

### Community benefit consultation survey

The project is still at an early stage of design and it could be several years before it is determined. However, we have received a high level of interest - through our recent online exhibition and consultation - regarding the local benefits that could be delivered from the proposal.

In response, we have decided to launch an online survey to gather feedback and ideas from the local community on community benefits, maximising local supply chain opportunities, and the opportunity for shared ownership in the wind farm itself. The survey launched on Thursday 8th April 2021.

Based on the current 26-turbine layout (and installed capacity of 156MW), Musdale Wind Farm could provide a community benefit fund of around £780,000 a year to the local community (or £19.5 million in total) based on a 25-year life cycle<sup>3</sup>.

If you would like to take part in the survey or share your ideas with us on community benefit, local supply chain opportunities or shared ownership, please visit the project website at [www.vattenfall.co.uk/musdale](http://www.vattenfall.co.uk/musdale) and complete the **Community Benefit Consultation survey** before the closing date of Saturday 8th May 2021.

Electronic (and paper) copies of the survey can be requested by contacting the project team (contact details provided overleaf).

<sup>3</sup> Turbine numbers and technology (as well as Scottish Government guidance on community benefit) can change, which means that the community benefit figure may go up or down. The final figure will be confirmed when (and if) the project receives consent. Follow this link to find out more about the Scottish Government's 'Good Practice Principles for Community Benefits from Onshore Renewable Energy Developments': [https://consult.gov.scot/energy-and-climate-change-directorate/onshore-renewable-energy-developments/user\\_uploads/community-benefits-onshore-revised-gpp.pdf](https://consult.gov.scot/energy-and-climate-change-directorate/onshore-renewable-energy-developments/user_uploads/community-benefits-onshore-revised-gpp.pdf)



Clashindarroch Wind Farm

## Activity over the coming months

We'll be progressing environmental survey work, gathering community feedback on potential local benefits, updating our FAQs, and organising another exhibition.

### Environmental survey work



Surveyor at Vattenfall Wind Farm site

The Environmental Impact Assessment (EIA) survey work will continue over the coming months in order to build our understanding of the site, identify any issues and map constraints in order to help develop a design which minimises any impacts and maximises benefits.

The EIA work is a detailed undertaking and involves a team of independent specialists assessing considerations such as ornithology, ecology and fisheries, landscape and visual, cultural heritage, noise, hydrology, hydrogeology and peat, traffic and transport, access, and forestry. Once all of the EIA work is complete, a detailed Environmental Impact Assessment Report will be written up - setting out the findings.

### Community benefit consultation

The feedback from the community benefit consultation survey, which closes in May 2021, will be reviewed and used to help inform and shape further engagement later this year on the potential local benefits that could be delivered from Musdale Wind Farm.

### Updated FAQs

We are also planning to update our Frequently Asked Questions (FAQs), which were provided as part of the initial online exhibition and consultation, with answers to some of the new questions which have arisen from the consultation. The updated FAQs will be available on the project website at [www.vattenfall.co.uk/musdale](http://www.vattenfall.co.uk/musdale) (or in hard copy by contacting Vattenfall) from around mid-April.

### Further exhibition - later this year

We are planning to hold a public exhibition and consultation later this year to update the local community on the design development and listen to people's feedback. We hope to be able to hold this event in the local area, Covid permitting, so that we can talk to people face to face. We are also planning a further exhibition, around submission, in order to present the final design.

### Getting in touch


If you would like further information on the project or Vattenfall as a company please visit the Musdale project website at [www.vattenfall.co.uk/musdale](http://www.vattenfall.co.uk/musdale) or contact the project team using the details below:

Musdale Project Team  
Vattenfall Wind Power Ltd.  
St Andrew's House  
Haugh Lane  
Hexham  
Northumberland  
NE46 3QQ

01434 611300  
[musdale.windfarm@vattenfall.com](mailto:musdale.windfarm@vattenfall.com)

### Keeping you informed

→ Visit [www.vattenfall.co.uk/musdale](http://www.vattenfall.co.uk/musdale) to get regular updates on Musdale Wind Farm or get in touch using the contact details above if you would like to be added to our newsletter mailing list.

→ Follow:  Vattenfall UK  @VattenfallUK