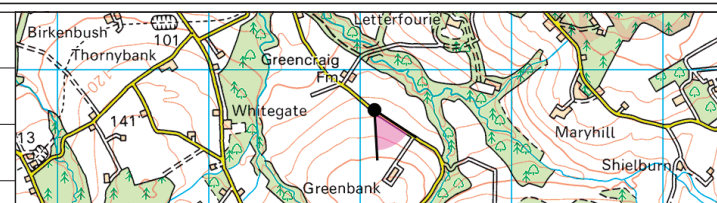


Date August 2023	By SPB
Image Size 820 x 260mm	QA DT
Paper Size 840 x 297mm	Rev -
0107-Illustrative-wirelines.indd	



Notes:

- 1) This visualisation is a planar projection panorama. View flat at a comfortable arm's length.
- 2) This data has been output directly from the wireline model. It ignores screening effects of woodland and other intervening objects.
- 3) All directions given as bearings relative to Grid North (BNG).
- 4) Location map scale: 1:50,000

Contains Ordnance Survey data © Crown copyright and database right 2023
© Crown copyright. All rights reserved. 2023 Licence number: 10002565

Viewpoint Information:

Grid Reference: 344097E 861734N
 Ground Height: 127.3m AOD
 Direction of Centre of View: 150°
 Horizontal Field of View: 53.5°
 Vertical Field of View: 18.2°
 Principal Distance: 812.5mm

Layout Information:

Layout: aultmore.wfl
 Hub Height: 115m
 Height to Blade Tip: 200m
 Nearest Visible Turbine: T6 @ 3077m
 Number of Sets of Tips Visible: 2
 Number of Hubs Visible: 8

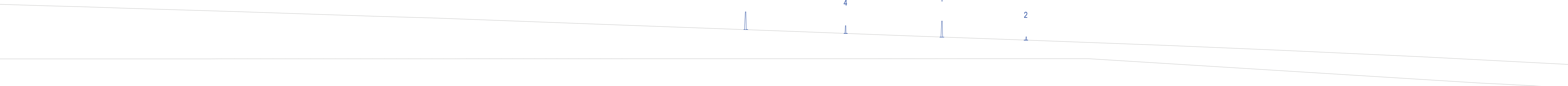
Wireline Key:

	Aultmore
	Operational / Under Construction
	Lurg Hill



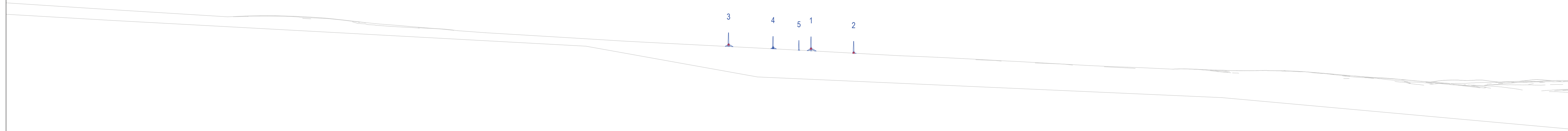
Aultmore Wind Farm Redesign

Illustrative Viewpoint A1: Local Road near Greenbank
WIRELINE VISUALISATION



Date August 2023	By SPB		Notes: 1) This visualisation is a planar projection panorama. View flat at a comfortable arm's length. 2) This data has been output directly from the wireline model. It ignores screening effects of woodland and other intervening objects. 3) All directions given as bearings relative to Grid North (BNG). 4) Location map scale: 1:50,000 Contains Ordnance Survey data © Crown copyright and database right 2023 © Crown copyright. All rights reserved. 2023 Licence number: 10002565	Viewpoint Information: Grid Reference: 344097E 861734N Ground Height: 127.3m AOD Direction of Centre of View: ³ 203.5° Horizontal Field of View: 53.5° Vertical Field of View: 18.2° Principal Distance: 812.5mm	Layout Information: Layout: aultmore.wfl Hub Height: 115m Height to Blade Tip: 200m Nearest Visible Turbine: T6 @ 3077m Number of Sets of Tips Visible: ² 15 Number of Hubs Visible: ² 8	Wireline Key:
Image Size 820 x 260mm	QA DT					
Paper Size 840 x 297mm	Rev -					
0107-Illustrative-wirelines.indd						





Date August 2023	By SPB		Notes: 1) This visualisation is a planar projection panorama. View flat at a comfortable arm's length. 2) This data has been output directly from the wireline model. It ignores screening effects of woodland and other intervening objects. 3) All directions given as bearings relative to Grid North (BNG). 4) Location map scale: 1:50,000 Contains Ordnance Survey data © Crown copyright and database right 2023 © Crown copyright. All rights reserved. 2023 Licence number: 10002565
Image Size 820 x 260mm	QA DT		
Paper Size 840 x 297mm	Rev -		
0107-illustrative-wirelines.indd			

Viewpoint Information:	
Grid Reference:	346541E 867709N
Ground Height:	46.4m AOD
Direction of Centre of View: ³	204.4°
Horizontal Field of View:	53.5°
Vertical Field of View:	18.2°
Principal Distance:	812.5mm

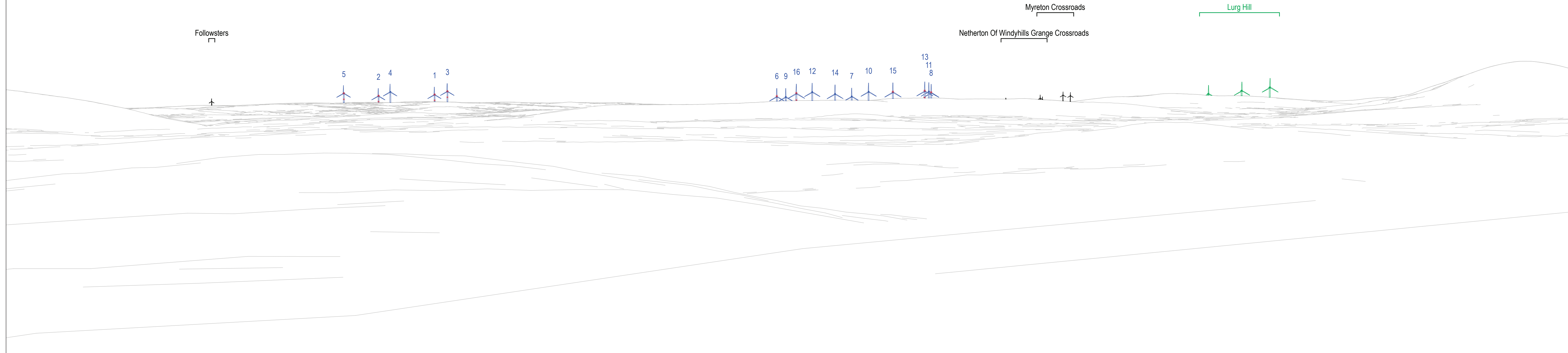
Layout Information:	
Layout:	aultmore.wfl
Hub Height:	115m
Height to Blade Tip:	200m
Nearest Visible Turbine:	T1 @ 11178m
Number of Sets of Tips Visible: ²	5
Number of Hubs Visible: ²	4

Wireline Key:	
	Aultmore
	Operational / Under Construction
	Lurg Hill

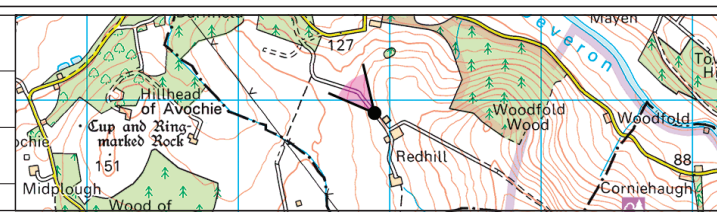


Aultmore Wind Farm Redesign

Illustrative Viewpoint B: Findochty
WIRELINER VISUALISATION



Date	By
August 2023	SPB
Image Size	QA
820 x 260mm	DT
Paper Size	Rev
840 x 297mm	-
0107-illustrative-wirelines.indd	



Notes:

- 1) This visualisation is a planar projection panorama. View flat at a comfortable arm's length.
- 2) This data has been output directly from the wireline model. It ignores screening effects of woodland and other intervening objects.
- 3) All directions given as bearings relative to Grid North (BNG).
- 4) Location map scale: 1:50,000.

Contains Ordnance Survey data © Crown copyright and database right 2023
© Crown copyright. All rights reserved. 2023 Licence number: 10002565

Viewpoint Information:

Grid Reference: 355898E 846914N
 Ground Height: 177.7m AOD
 Direction of Centre of View: 320°
 Horizontal Field of View: 53.5°
 Vertical Field of View: 18.2°
 Principal Distance: 812.5mm

Layout Information:

Layout: aultmore.wfl
 Hub Height: 115m
 Height to Blade Tip: 200m
 Nearest Visible Turbine: T16 @ 13947m
 Number of Sets of Tips Visible: 2
 Number of Hubs Visible: 2

Wireline Key:

	Aultmore
	Operational / Under Construction
	Lurg Hill



Aultmore Wind Farm Redesign

Illustrative Viewpoint C: Deveron Valley

WIRELINE VISUALISATION