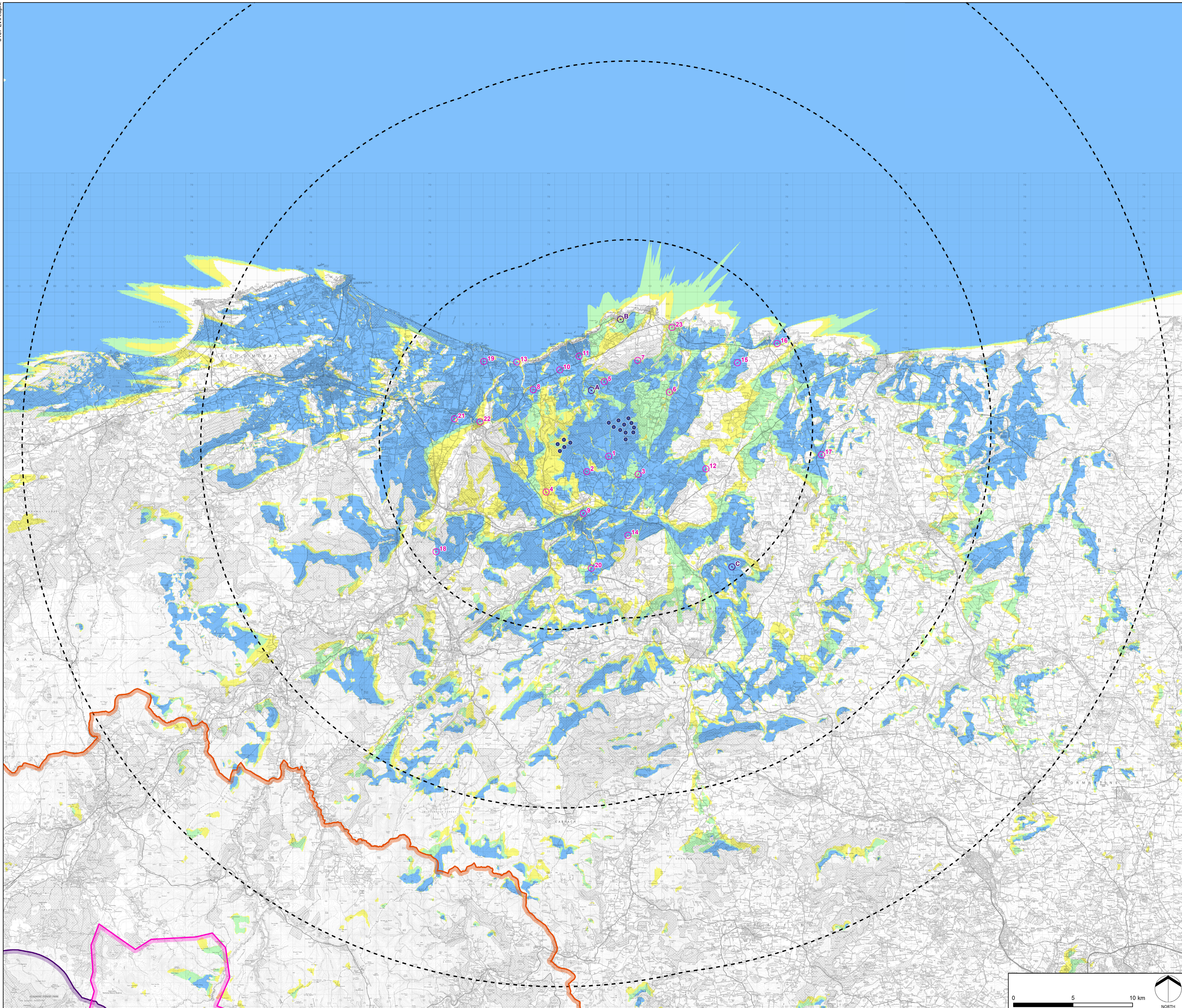


AULTMORE WIND FARM REDESIGN

FIGURE 6.1

Zone of Theoretical Visibility - Blade Tip (Bare Ground)



KEY

- Proposed Aultmore Wind Turbines
- Distance Radii from Outermost Turbine (15, 30, 45km)
- Viewpoints
- Illustrative Viewpoint Wirelines
- Cairngorms National Park
- National Scenic Area - The Cairngorm Mountains
- Wild Land - Cairngorms
- Zone of Theoretical Visibility to Blade Tip (200m)**
- 1 - 5 turbines may be visible
- 6 - 11 turbines may be visible
- 12 - 16 turbines may be visible

FIGURE DATA:

This figure has been based on the following data:

Layout file: D006-obvs-BT-T5-15km.shp; D006-obvs-BT-T50-45km.shp
 Terrain data: T5-DTM.asc; T50-DTM.asc
 Viewer's eye height: 2m above ground level
 Calculation grid size: 5m (to 15km from turbines) / 50m (beyond)

NOTES:

This drawing is based upon computer generated Zone of Theoretical Visibility (ZTV) studies produced using the Viewshed routine in the Visibility Analysis plugin for QGIS.

The areas shown are the maximum theoretical visibility, taking topography into account.

This visibility map is based on a 'bare earth' model of the landform and does not show any effects of screening from obstacles such as buildings and vegetation.

The ZTV includes an adjustment that allows for Earth's curvature and light refraction. It is based on a DTM and has a 5m² (to 15km from turbines) / 50m² (beyond) resolution.

Projected Coordinate System: British National Grid

DATE	BY	PAPER	SCALE	QA	REV
NOV 2023	MP	A1	1:150,000	KA	-