

340000

345000

350000

860000

03640.000/16.0/182.0 Aultmore Predicted Operational Noise Levels at 8ms

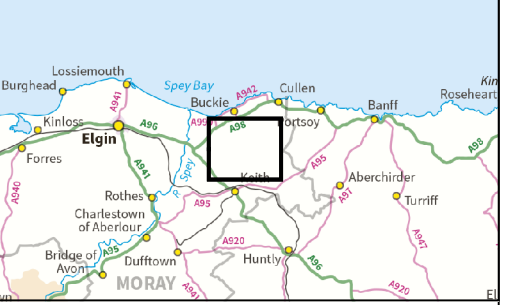
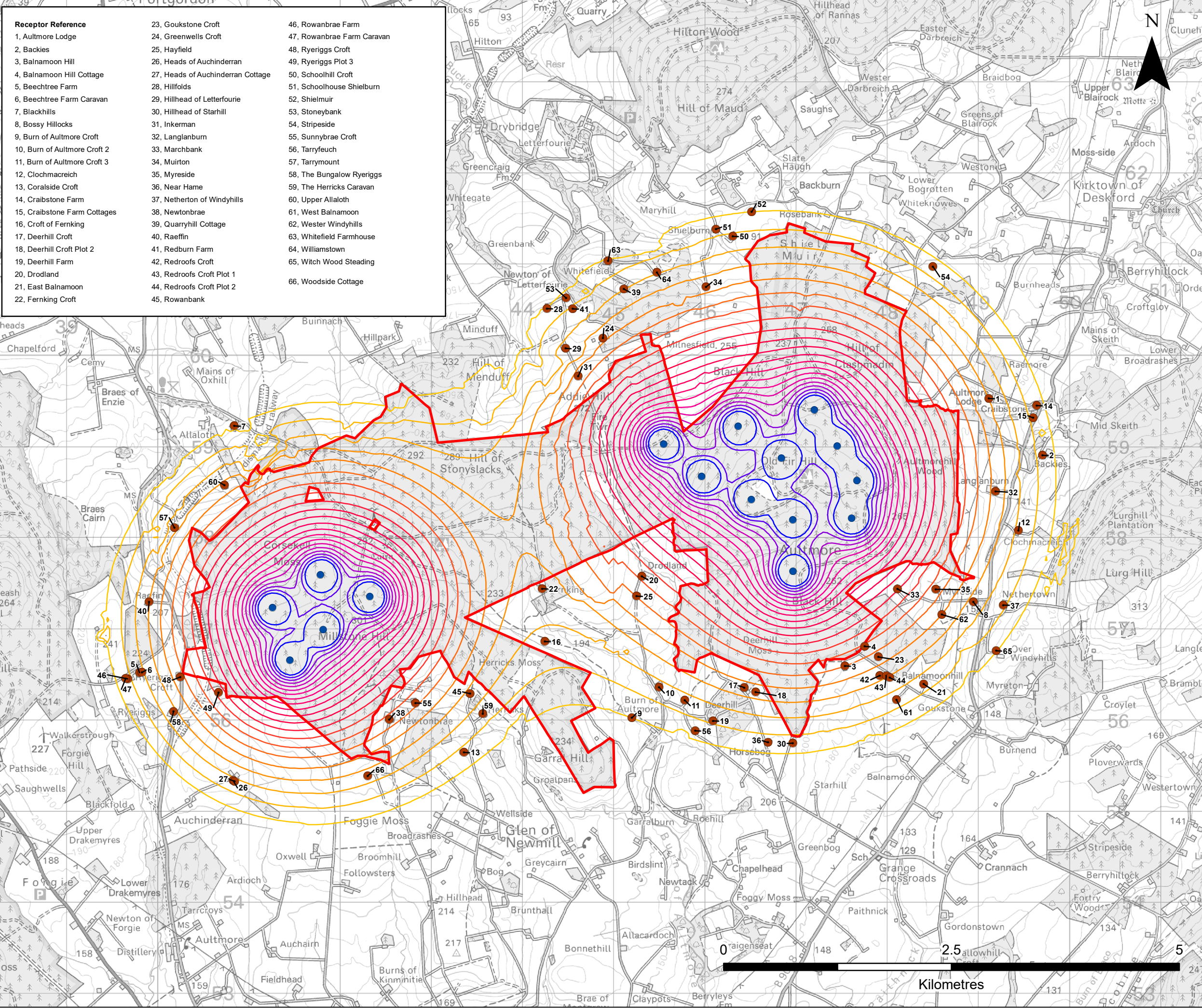
Receptor Reference		
1, Aultmore Lodge	23, Goukstone Croft	46, Rowanbrae Farm
2, Backies	24, Greenwells Croft	47, Rowanbrae Farm Caravan
3, Balnamoon Hill	25, Hayfield	48, Ryeriggs Croft
4, Balnamoon Hill Cottage	26, Heads of Auchinderran	49, Ryeriggs Plot 3
5, Beechtree Farm	27, Heads of Auchinderran Cottage	50, Schoolhill Croft
6, Beechtree Farm Caravan	28, Hillfolds	51, Schoolhouse Shielburn
7, Blackhills	29, Hillhead of Letterfourie	52, Shielmuir
8, Bossy Hillocks	30, Hillhead of Starhill	53, Stoneybank
9, Burn of Aultmore Croft	31, Inkerman	54, Stripeside
10, Burn of Aultmore Croft 2	32, Langlanburn	55, Sunnybrae Croft
11, Burn of Aultmore Croft 3	33, Marchbank	56, Tarryfeuch
12, Clochmacreich	34, Muirton	57, Tarrymount
13, Coralside Croft	35, Myreside	58, The Bungalow Ryeriggs
14, Craibstone Farm	36, Near Hame	59, The Herricks Caravan
15, Craibstone Farm Cottages	37, Netherton of Windyhills	60, Upper Allaloth
16, Croft of Fernking	38, Newtonbrae	61, West Balnamoon
17, Deerhill Croft	39, Quarryhill Cottage	62, Wester Windyhills
18, Deerhill Croft Plot 2	40, Raeffin	63, Whitefield Farmhouse
19, Deerhill Farm	41, Redburn Farm	64, Williamstown
20, Drodland	42, Redroofs Croft	65, Witch Wood Steading
21, East Balnamoon	43, Redroofs Croft Plot 1	66, Woodside Cottage
22, Fernking Croft	44, Redroofs Croft Plot 2	
	45, Rowanbank	

**LEGEND**

- Site Boundary
- Turbine

**Predicted Noise Levels (dB LA90)**

- 30
- 35
- 40
- 45
- 50



**VATTENFALL**

**SLR**

4/5 LOCHSIDE VIEW  
EDINBURGH PARK  
EDINBURGH  
EH12 9DH

T: +44 (0)131 335 6830  
www.slrconsulting.com

**AULTMORE WIND FARM REDESIGN**

**CHAPTER 11 - ACOUSTIC**

**PREDICTED OPERATIONAL NOISE LEVELS AT 8M/S – AULTMORE ONLY**

**FIGURE 11.1**

Scale: 1:40,000 @ A3      Date: OCTOBER 2023