

- Legend**
- Mynydd Lluest y Graig Development Boundary
 - Area excluded from wind turbine placement.
 - A1.1.1 - Broadleaved woodland - semi-natural
 - A1.1.2 - Broadleaved woodland - plantation
 - A1.2.2 - Coniferous Woodland - semi natural
 - A1.3.2 - Mixed Woodland - plantation
 - A2.1 - Scrub - dense/continuous
 - A2.2 - Scrub - scattered
 - A3.1 - Broadleaved Parkland/scattered trees
 - A4.2 - Coniferous woodland - recently felled
 - B1.1 - Acid grassland - unimproved
 - B1.2 - Acid grassland - semi-improved
 - B2.2 - Neutral grassland - semi-improved
 - B4 - Improved Grassland
 - B5 - Marshy/marshy grassland
 - B5.1 - Marsh/marshy grassland
 - B6 - Poor semi-improved grassland
 - C1.1 - Bracken - continuous
 - D5 - Dry heath/acid grassland
 - D6 - Wet heath/acid grassland
 - E1.6.1 - Blanket sphagnum bog
 - E1.7 - Wet modified bog
 - E1.8 - Dry modified bog
 - E2.1 - Flush and spring - acid/neutral flush
 - E3.1 - Fen - valley mire
 - F2.2 - Marginal and inundation - inundation vegetation
 - G1 - Running water - eutrophic
 - G2 - Running water - mseotrophic
 - I2.1 - Quarry
 - J1.1 - Cultivated/disturbed land - arable
 - J2.3.1 - Hedge with trees - native species rich
 - J2.3.2 - Hedge with trees - species-poor
 - J3.6 - Buildings
 - J4 - Bareground

SCALE 1:25,000 (A3)

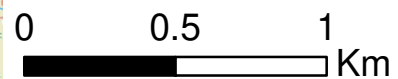
Mynydd Lluest y Graig
ENERGY PROJECT

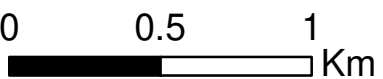
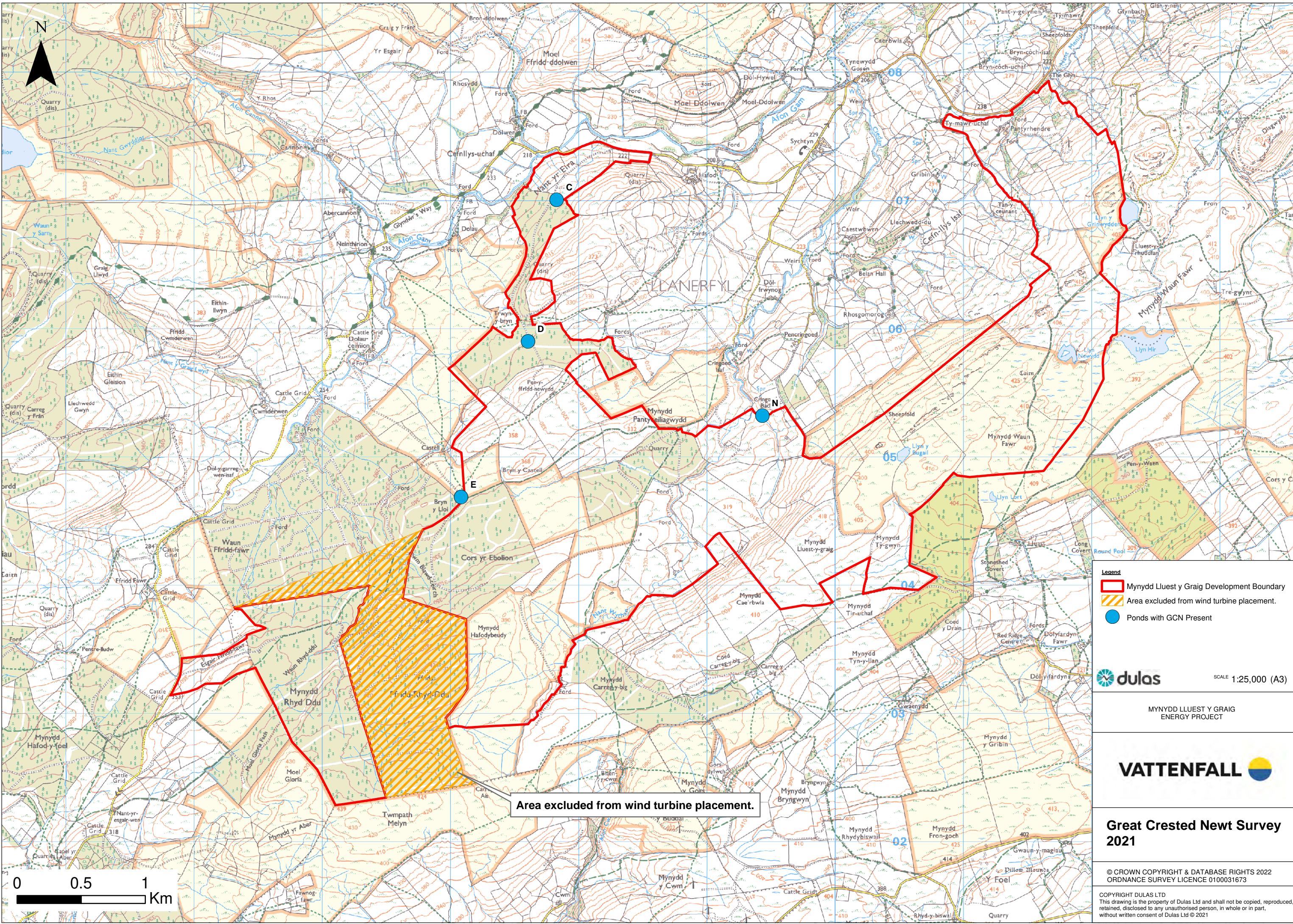


**Phase 1 Habitat Survey Map
2018**

© CROWN COPYRIGHT & DATABASE RIGHTS 2022
ORDNANCE SURVEY LICENCE 0100031673

COPYRIGHT DULAS LTD
This drawing is the property of Dulas Ltd and shall not be copied, reproduced, retained, disclosed to any unauthorised person, in whole or in part, without written consent of Dulas Ltd © 2021





- Legend**
- Mynydd Llest y Graig Development Boundary
 - Area excluded from wind turbine placement.
 - Ponds with GCN Present

dulas SCALE 1:25,000 (A3)

Mynydd Llest y Graig
ENERGY PROJECT

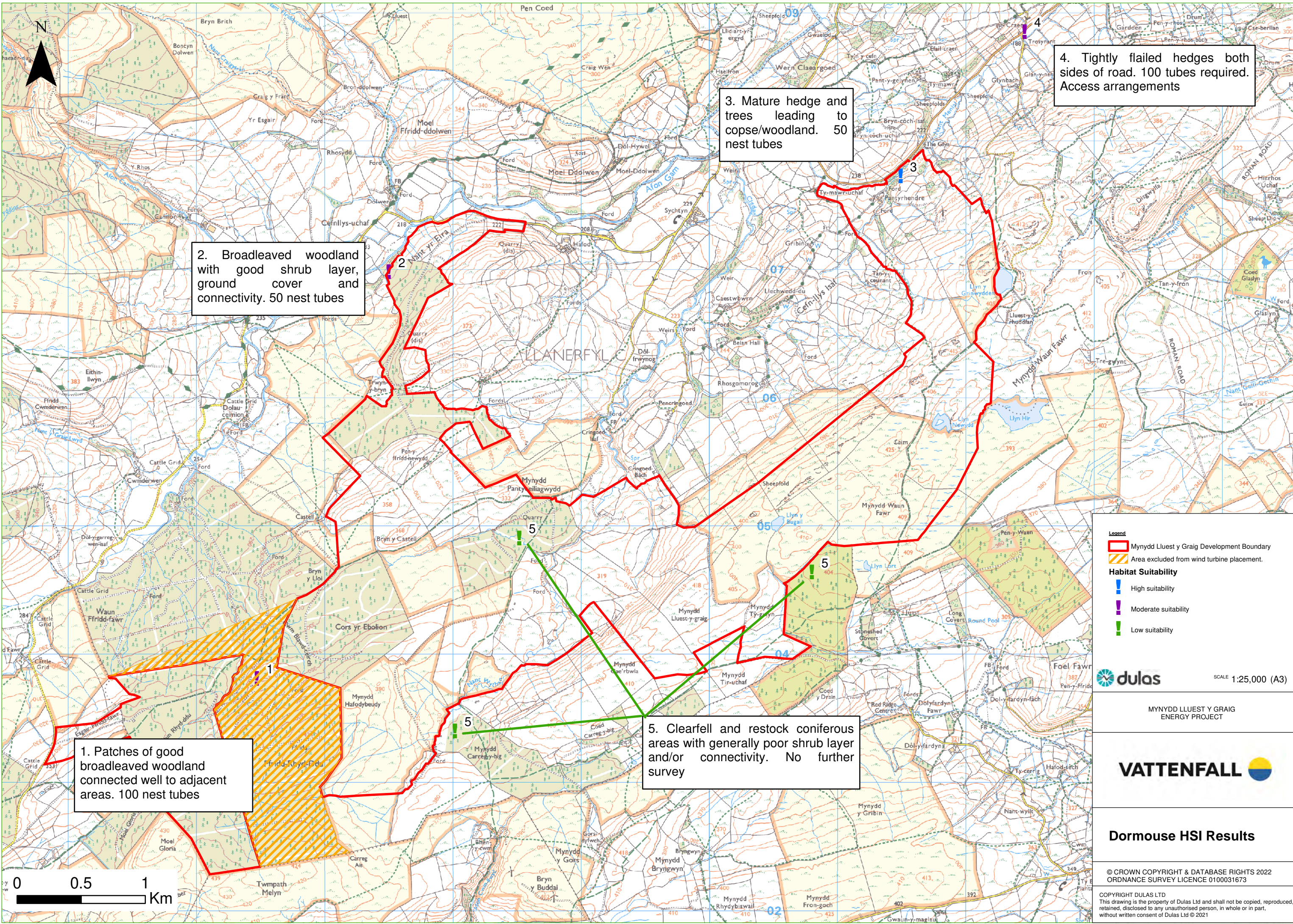


**Great Crested Newt Survey
2021**

© CROWN COPYRIGHT & DATABASE RIGHTS 2022
ORDNANCE SURVEY LICENCE 0100031673

COPYRIGHT DULAS LTD
This drawing is the property of Dulas Ltd and shall not be copied, reproduced, retained, disclosed to any unauthorised person, in whole or in part, without written consent of Dulas Ltd © 2021

Area excluded from wind turbine placement.



4. Tightly flailed hedges both sides of road. 100 tubes required. Access arrangements

3. Mature hedge and trees leading to copse/woodland. 50 nest tubes

2. Broadleaved woodland with good shrub layer, ground cover and connectivity. 50 nest tubes

1. Patches of good broadleaved woodland connected well to adjacent areas. 100 nest tubes

5. Clearfell and restock coniferous areas with generally poor shrub layer and/or connectivity. No further survey

- Legend**
- Mynydd Lluest y Graig Development Boundary
 - Area excluded from wind turbine placement.
- Habitat Suitability**
- High suitability
 - Moderate suitability
 - Low suitability

dulas SCALE 1:25,000 (A3)

Mynydd Lluest y Graig Energy Project

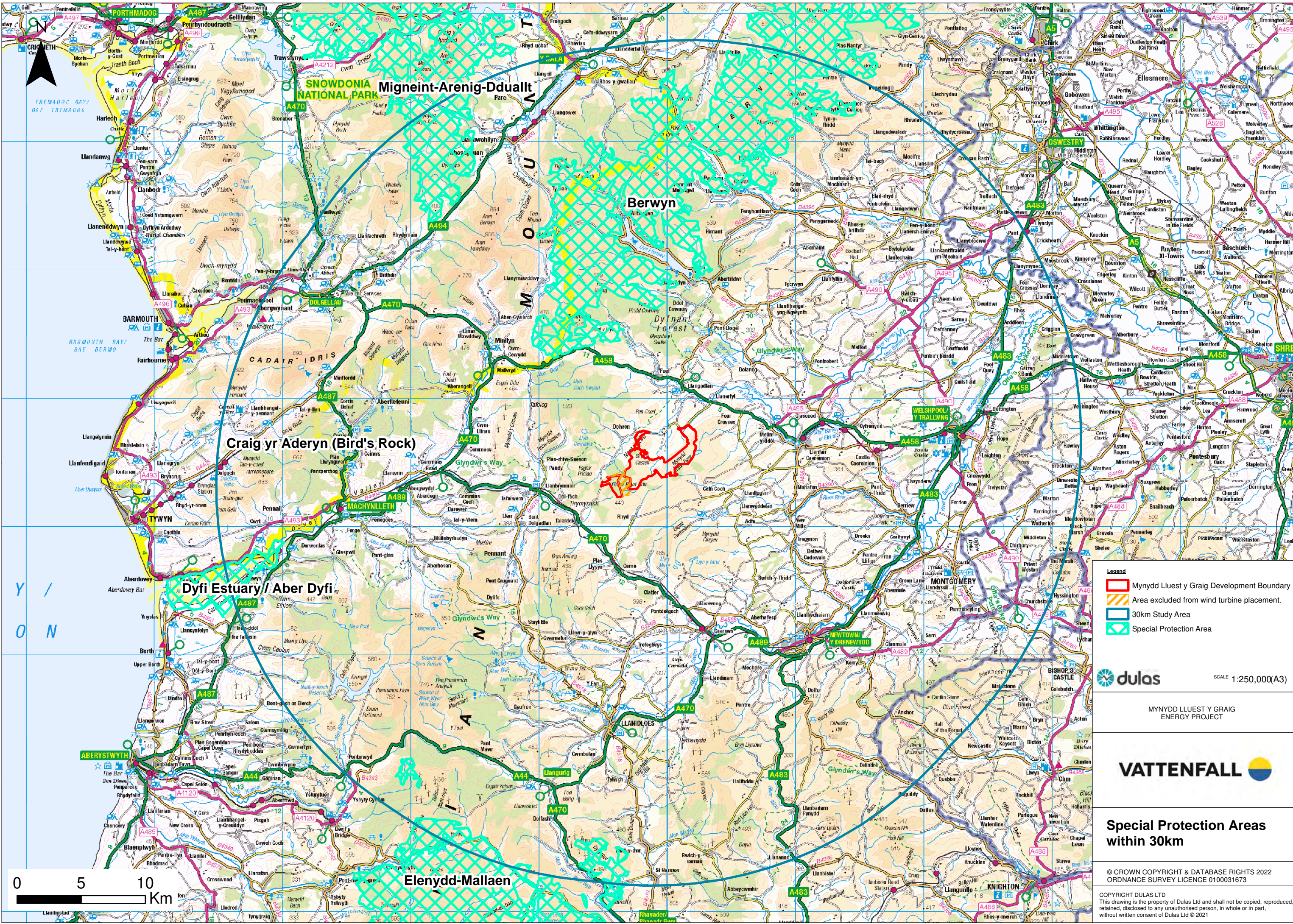
VATTENFALL





Dormouse HSI Results

© CROWN COPYRIGHT & DATABASE RIGHTS 2022
ORDNANCE SURVEY LICENCE 0100031673

COPYRIGHT DULAS LTD
This drawing is the property of Dulas Ltd and shall not be copied, reproduced, retained, disclosed to any unauthorised person, in whole or in part, without written consent of Dulas Ltd © 2021

0 0.5 1 Km



- Legend**
-  Mynydd Llest y Graig Development Boundary
 -  Area excluded from wind turbine placement.
 -  30km Study Area
 -  Special Protection Area

 SCALE 1:250,000(A3)

MYNYDD LLEST Y GRAIG ENERGY PROJECT

VATTENFALL 

Special Protection Areas within 30km

© CROWN COPYRIGHT & DATABASE RIGHTS 2022
ORDNANCE SURVEY LICENCE 0100031673

COPYRIGHT DULAS LTD
This drawing is the property of Dulas Ltd and shall not be copied, reproduced, retained, disclosed to any unauthorised person, in whole or in part, without written consent of Dulas Ltd © 2021